

# NOTICE TO MARINERS



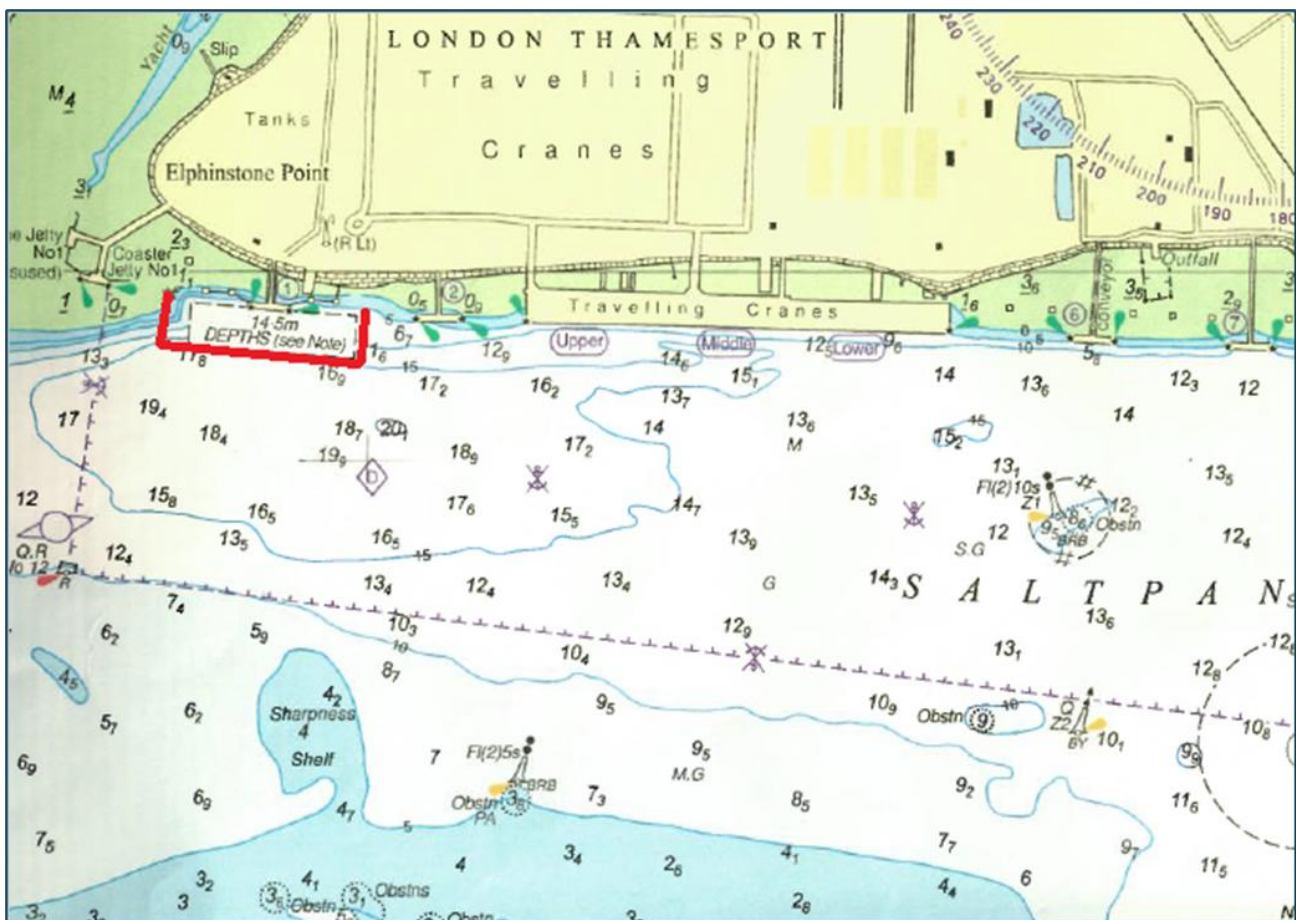
## NtoM 011 - 2026

### River Medway – Saltpan Reach

### BP Isle of Grain Jetty No.1 – Dredging Operations

**NOTICE IS HEREBY GIVEN THAT:** dredging operations are due to commence at BP Isle of Grain Jetty No.1 on or around 25<sup>th</sup> February 2026 with a projected completion date of 5<sup>th</sup> March 2026. All dredging will be focussed on the berthing box of IOG. Jetty No.1 and will be carried out by the water injection dredger 'Maas'. 'Maas' will maintain a listening watch on VHF Channel 74 at all times and display the required signals for respective operations by day and night.

**All vessels passing Isle of Grain Jetty No.1 during the dredging period are requested to navigate with caution reducing speed and wash accordingly.**



Issued on behalf of Port of Sheerness Ltd, the Statutory Harbour Authority for the River Medway and The Swale  
Telephone calls, VHF radio traffic, CCTV and radar traffic images may be recorded at  
the Peel Ports Group Port Control Centre, Liverpool.

## WID “Maas”



Further information may be obtained from Medway VTS on VHF Channel 74, call sign “Medway VTS” or telephone 0151 949 6148 or 0151 949 6650 **(Recorded Lines)**.

**Marine Operations Department  
Peel Ports London Medway**

Notice Issued:  
Notice Expiry:

9<sup>th</sup> February 2026  
8<sup>th</sup> March 2026