

NOTICE TO MARINERS

No. 04 – 2024

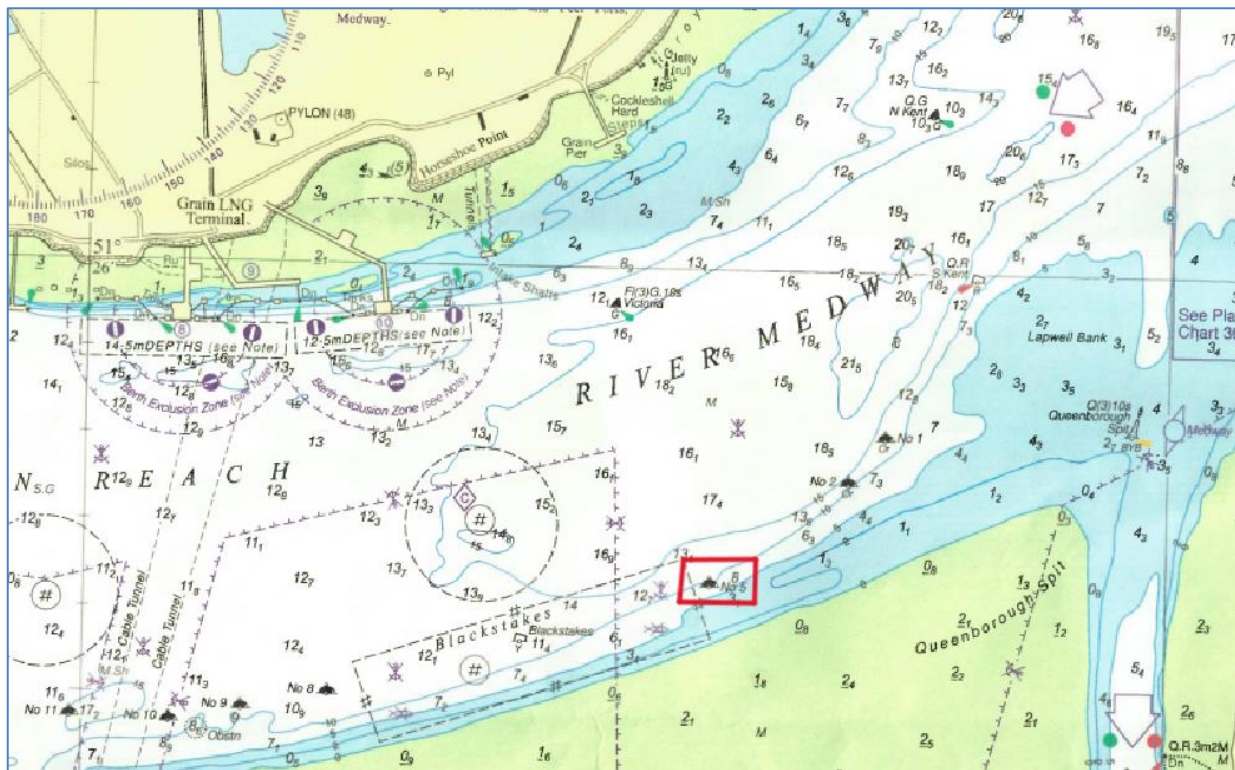
River Medway - Saltpan Reach

No.5 Mooring Buoy – Submerged Obstruction

Notice is hereby given that a 20m x 7m crane barge has sunk adjacent to the Saltpan No.5 mooring buoy that it was secured to. The barge now lies flat on the seabed approximately 20 meters from the buoy. The obstruction has been marked with 2 yellow and orange pellet buoys and is in the approximate position given below.

Approximate Position of Obstruction - 51° 25.364 N 000° 43.153 E

Attempts to raise the barge will be made in the coming days/weeks, but until recovered, all vessels should avoid navigating in the vicinity of Saltpan No.5 mooring buoy.



Admiralty Chart No. 1834 refers.

Further information may be obtained from Medway VTS on VHF Channel 74, call sign “Medway VTS” or telephone 0151 949 6148 or 0151 949 6650. **(Recorded Lines)**

**Marine Operations Department
Peel Ports London Medway**

4th January 2024

Issued on behalf of Port of Sheerness Ltd. the Statutory Harbour Authority for the River Medway and The Swale
Telephone calls, VHF radio traffic, CCTV and radar traffic images may be recorded at
the Peel Ports Group Port Control Centre, Liverpool.