

# *Discover the Medway Estuary*



---

# *Welcome to the Medway Estuary*

---

**Welcome to this new guide to the Medway Estuary, an invaluable aid for those looking to explore and make the most of this stunning area.**

People have lived and worked on or around the estuary for thousands of years. As a result it is rich in both archaeological and historical remains including: Prehistoric droveways (used to move cattle); Roman pottery kiln sites; Anglo Saxon fish traps (known as Snowt Weirs); numerous military installations, going as far back as the 11th century and two historic dockyards.

Today the estuary is of national and international significance,

both economically and environmentally. As a major trading route, it is home to several important shipping terminals, handling a wide range of products and raw materials. Since 1995 it has also played a key role in the UK's energy supply network, with power stations at Kingsnorth and Grain.

Despite this industrial landscape the estuary continues to support an impressively diverse ecosystem, providing the perfect

habitat for thousands of breeding and wintering birds. These birds are so important that the estuary is protected by both national and international designations.

Whether you are looking to relax in the glow of incredible beauty, or get active on water or land, the estuary has something for everybody. Simply respect the delicate balance of nature and the area will continue to inspire future generations. Happy exploring!



# On the water

Getting out on the water is a unique way to experience what makes the estuary so vital. Join an organised bird cruise and get closer to the internationally-important populations of wading and waterfowl birds. Or if you prefer history, there are numerous fortifications to discover along the water's edge. Of course, if you just want to get away from it all, the estuary is a tranquil haven amidst the hustle and bustle of the south-east.

## Boating

The estuary is home to a fantastic array of yacht clubs and marinas, offering a wide range of recreational and competitive sailing activities. Most clubs have visitor moorings, which are available upon request. For those who don't own a boat there are still great ways to explore the estuary. Join a bird watching trip at Gillingham Pier or on the Kingswear Castle Paddle Steamer, which leaves from Rochester and Chatham. In addition the Arethusa

Venture Centre in Upnor provides training in a number of watersports, including sailing and canoeing.

## Fishing

Fishing is still very much a part of estuary life, both commercially and as a recreational past time. To find out more about recreational fishing in the area, simply visit your local tackle and bait shop. If you intend to dig for your own bait in the estuary, please follow Natural England's Bait Digging Code which can be downloaded at [www.msep.org.uk](http://www.msep.org.uk)

## Personal water craft

Opportunities for riding personal water crafts in the estuary are extremely limited. If you are in any doubt as to where you can legally ride, please contact Peel Ports Medway, *see further information*. Please also refer to the PWC Code of Conduct which can be downloaded at [www.msep.org.uk](http://www.msep.org.uk)



© Rachel Baldock





# What to look out for

## Wildlife



Brent geese



Curlew



Little egret



Oyster catcher



Turnstone



Common seal



Avocet

## History



Upnor Castle



Rochester Castle



Cockham Wood Fort



Darnet Fort

### The importance of the estuary's ecosystem has been recognised by the following designations:

- Special Protection Areas (SPA), classified under the EC Directive on the Conservation of Wild Birds ([www.jncc.defra.gov.uk](http://www.jncc.defra.gov.uk)).
- Wetland of International Importance, under the Ramsar Convention ([www.ramsar.org](http://www.ramsar.org)).
- Site of Special Scientific Interest (SSSIs), designation under the Wildlife and Countryside Act 1981,

amended by the Crow Act 2000 ([www.sssi.naturalengland.org.uk](http://www.sssi.naturalengland.org.uk)).

### Please help protect its natural environment by:

- Not alighting on the many privately owned islands, which often act as high tide roosts for birds. This will reduce the chances of them abandoning their nests. The islands also support a number of rare and important plant species.

- Not getting too close, as this will help minimise the disturbance to feeding and roosting birds, saving them valuable energy.
- Where possible, using only official moorings.
- Observing speed limits, navigation rules and byelaws.
- Observing Natural England's bait digging regulations (available at [www.msep.org.uk](http://www.msep.org.uk))

# *Enjoying the water*

## Water sports

---

### Arethusa Watersports Centre

[www.arethusa.org.uk](http://www.arethusa.org.uk)  
01634 719933

### Medway Watersports Centre

[www.medwaywatersportscentre.org](http://www.medwaywatersportscentre.org)  
01634 338754

## Clubs, marinas and moorings

---

### Beacon Boatyard

[www.beaconboatyard.co.uk](http://www.beaconboatyard.co.uk)  
01634 841320

### Chatham Maritime Marina

[www.mdlmarinas.co.uk](http://www.mdlmarinas.co.uk)  
01634 899200

### Gillingham Marina

[www.gillingham-marina.co.uk](http://www.gillingham-marina.co.uk)  
01634 280022

### Hollowshore Cruising Club

[www.hollowshorecc.co.uk](http://www.hollowshorecc.co.uk)

### Hoo Marina

[www.hoomarina.com](http://www.hoomarina.com)  
01634 250311

### Hoo Ness Yacht Club

[www.hooness.org.uk](http://www.hooness.org.uk)  
01634 250052

### Hundred of Hoo Sailing Club

[www.hundredofhoosc.org.uk](http://www.hundredofhoosc.org.uk)  
01634 250102

### Lower Halstow Yacht Club

[www.lhyc.org.uk](http://www.lhyc.org.uk)

### Mariners Farm Boatyard

[www.marinersboatyard.co.uk](http://www.marinersboatyard.co.uk)  
01634 233179

### Medway Bridge Marina

[www.medwaybridgemarina.co.uk](http://www.medwaybridgemarina.co.uk)  
01634 843576

### Medway Cruising Club

[www.medwaycruisingclub.org.uk](http://www.medwaycruisingclub.org.uk)  
01634 856489

### Medway Sailability

07778 300824

### Medway Towns Rowing Club

[www.medwaytownsrowingclub.co.uk](http://www.medwaytownsrowingclub.co.uk)  
07972 406518

### Medway Yacht Club

[www.medwayyachtclub.com](http://www.medwayyachtclub.com)  
01634 718399

### PWC Allhallows Yacht Club

Personal watercraft.  
07919 021210

### Rochester Cruising Club

[www.rochestercc.co.uk](http://www.rochestercc.co.uk)  
01634 841350

### Royal Naval Sailing Association (Medway branch)

01634 200970

### Segas Sailing Club

[www.segassailingclub.co.uk](http://www.segassailingclub.co.uk)  
01634 855365

### Strood Yacht Club

[www.stroodyachtclub.co.uk](http://www.stroodyachtclub.co.uk)  
01634 718261

### Upnor Sailing Club

[www.upnorsailing.co.uk](http://www.upnorsailing.co.uk)  
07092 197923

### Victory Moorings

07785 971797

### Whitton Marine

[www.whittonmarine.com](http://www.whittonmarine.com)  
01634 250593

### Wilsonian Sailing Club

[www.wilsoniansc.org.uk](http://www.wilsoniansc.org.uk)  
01634 250318

## Fishing clubs

---

### Kentmed Boat Fishing Club

[www.aacnet.org.uk/kentmed](http://www.aacnet.org.uk/kentmed)  
01622 808449

### Medway Rollers

[www.medwayrollersac.co.uk](http://www.medwayrollersac.co.uk)



## Charters

---

### Edith May Trading Company

[www.edithmaybarg charter.co.uk](http://www.edithmaybarg charter.co.uk)  
01634 365343

### Julie Sue – Bird Watching & Fishing

01634 233957 or 07803 238821

### Kingswear Castle Paddlesteamer

[www.kingswearcastle.co.uk](http://www.kingswearcastle.co.uk)  
01634 827648

# Medway Estuary Visitor chart



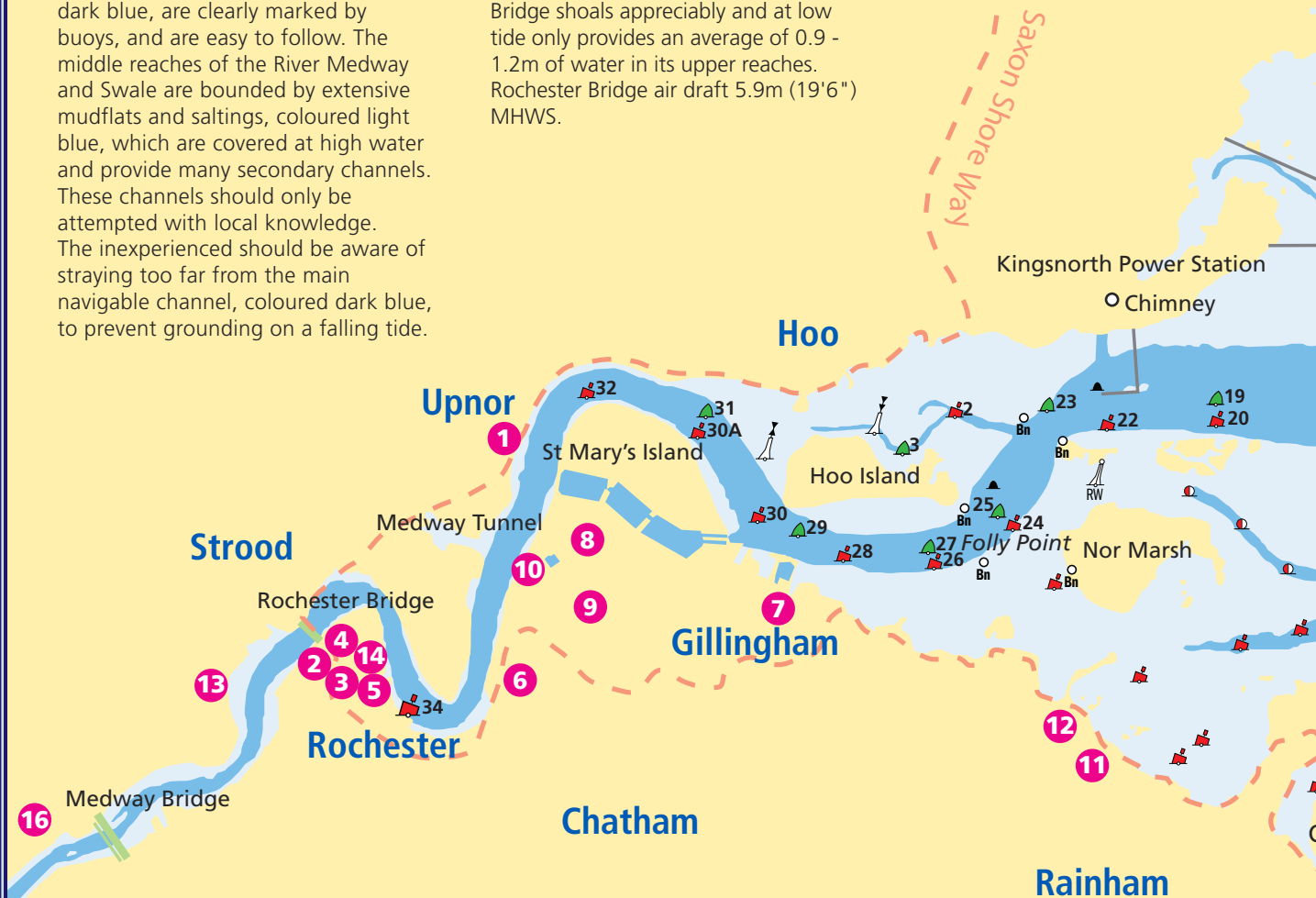
0 2000  
Metres

## Notes on navigation

The main navigable channels, coloured dark blue, are clearly marked by buoys, and are easy to follow. The middle reaches of the River Medway and Swale are bounded by extensive mudflats and saltings, coloured light blue, which are covered at high water and provide many secondary channels. These channels should only be attempted with local knowledge. The inexperienced should be aware of straying too far from the main navigable channel, coloured dark blue, to prevent grounding on a falling tide.

## Bridges

The River Medway above Rochester Bridge shoals appreciably and at low tide only provides an average of 0.9 - 1.2m of water in its upper reaches. Rochester Bridge air draft 5.9m (19'6") MHWS.



### Key to buoys

- Green standard - keep right up the river
- Red port - keep right down the river
- Yellow - danger
- Black - commercial mooring

### Communication channels

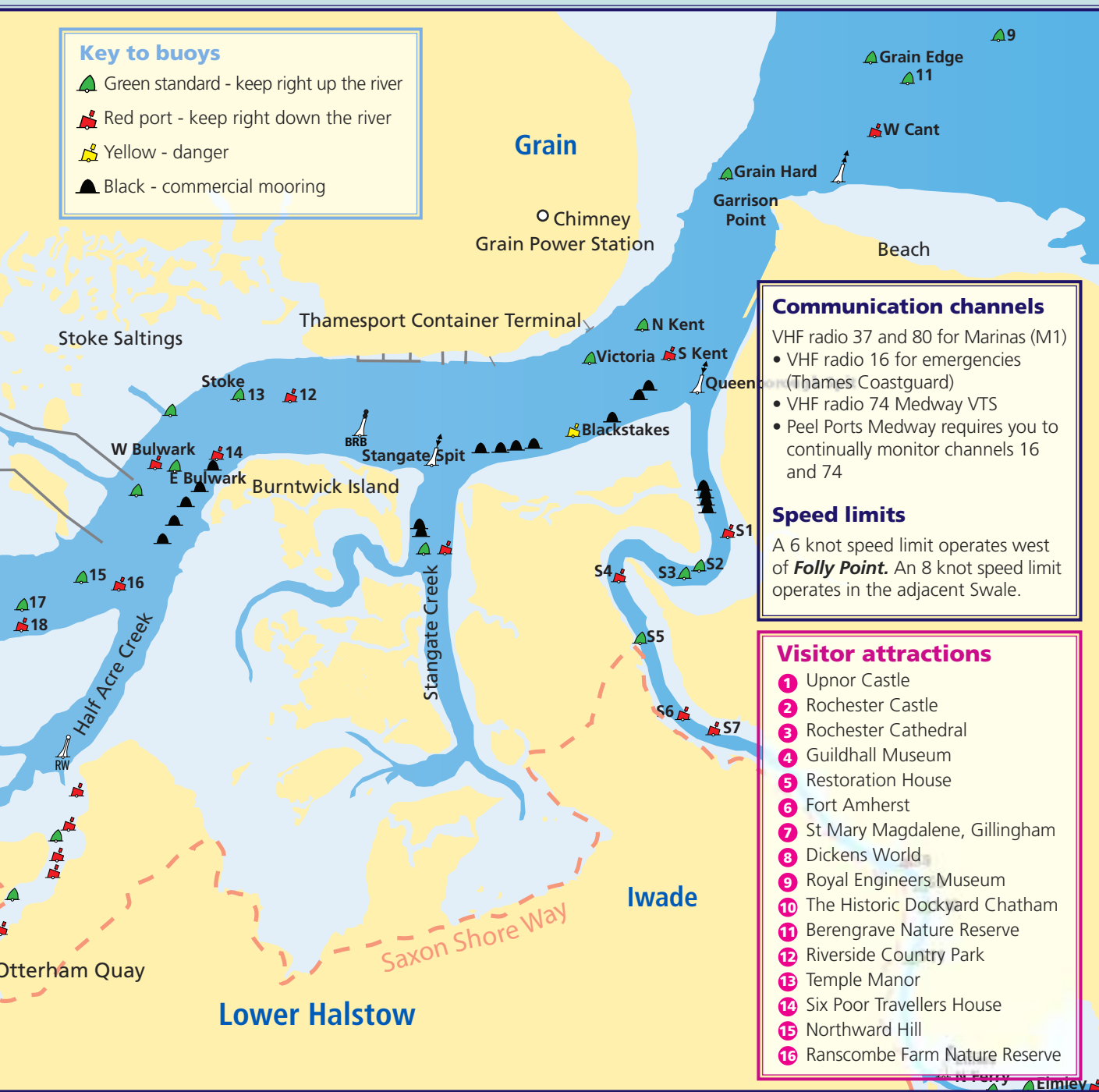
- VHF radio 37 and 80 for Marinas (M1)
- VHF radio 16 for emergencies (Thames Coastguard)
  - VHF radio 74 Medway VTS
  - Peel Ports Medway requires you to continually monitor channels 16 and 74

### Speed limits

A 6 knot speed limit operates west of **Folly Point**. An 8 knot speed limit operates in the adjacent Swale.

### Visitor attractions

- 1 Upnor Castle
- 2 Rochester Castle
- 3 Rochester Cathedral
- 4 Guildhall Museum
- 5 Restoration House
- 6 Fort Amherst
- 7 St Mary Magdalene, Gillingham
- 8 Dickens World
- 9 Royal Engineers Museum
- 10 The Historic Dockyard Chatham
- 11 Berengrave Nature Reserve
- 12 Riverside Country Park
- 13 Temple Manor
- 14 Six Poor Travellers House
- 15 Northward Hill
- 16 Ranscombe Farm Nature Reserve



# On the land - what to see and where to go

## Walking

The area's network of public footpaths are a great way to explore the estuary's stunning coastline and nearby historic villages and towns. One of the most popular routes is the Saxon Shore Way, which allows walkers to roughly follow the Kent and Sussex coastline as it was around 1,600 years ago.

There are a number of publications detailing the area's walking routes; available from local tourist information centres (*see further information*) and selected libraries. Many are also available as PDFs from the following websites:

[www.msep.org.uk](http://www.msep.org.uk)

[www.medway.gov.uk](http://www.medway.gov.uk) (*see Public Rights of Way*) and

[www.kent.gov.uk/explorekent](http://www.kent.gov.uk/explorekent)



## The Countryside Code Respect – Protect – Enjoy

- Be safe, plan ahead and follow any signs.
- Leave gates and property as you find them.
- Protect plants and animals and take your litter home.
- Keep dogs under close control.

For further information, please phone **08451 003298** or visit [www.countrysideaccess.gov.uk](http://www.countrysideaccess.gov.uk)

## Cycling

To explore the area by bike, take advantage of the Heron Trail on the Hoo Peninsula, as well as Sustrans National Cycle Route No 1, which is closely aligned to the Saxon Shore Way.

Visit [www.medway.gov.uk](http://www.medway.gov.uk)  
[www.kent.gov.uk/explorekent](http://www.kent.gov.uk/explorekent)  
or [www.sustrans.org.uk](http://www.sustrans.org.uk) for further information.



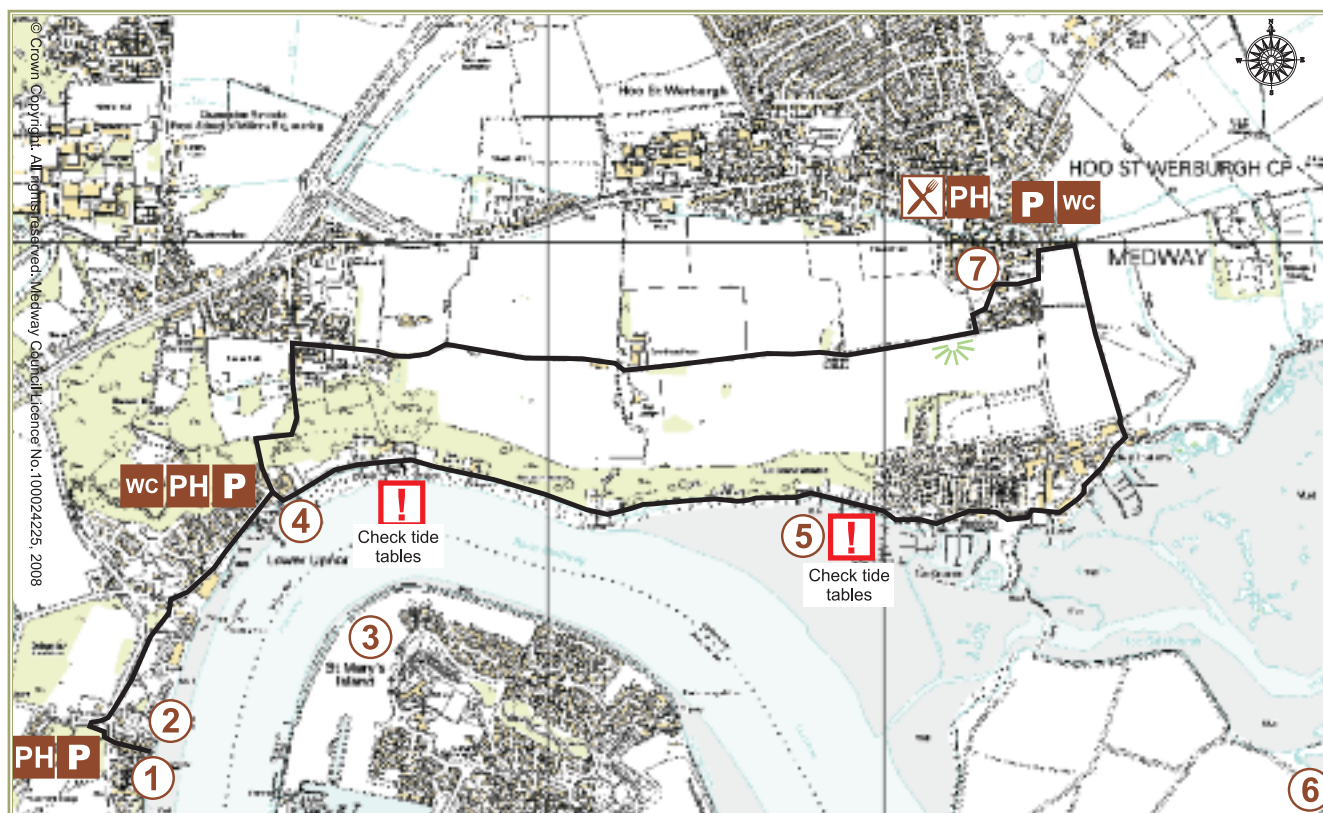


# Upnor to Hoo St Werburgh - a circular walk

Distance: **4 miles (6.4km)**

Time: **Allow 2 hours**

Terrain: **Some surfaced paths and roads. A long stretch of beach. One fairly steep path.**



## ① Upnor Castle

Built in the 16th century and designed to defend Chatham Dockyard from attack.

## ② Upnor High Street

A charming cobbled street lined with terraced weather-boarded houses, leading down towards the river.

## ③ St Mary's Island

Throughout much of the 19th century, huge prison hulks were moored along the river, including just off the St Mary's Island.

## ④ The London Stones

These two obelisks mark the southern extent of the City of London's fisherman's rights to fish

on the northern side of the river. The smaller stone is thought to have originally come from Yantlet creek.

## ⑤ Cockham Wood Fort

Built in the late 16th century as a direct result of the Dutch raid in 1667, the fort originally held 48 guns.

## ⑥ Hoo Fort

Hoo Fort and its near neighbour Darnet were built in the 1870s as part of the defences against an expected French invasion.

## ⑦ St Werburgh Church

The church dates mainly from the 14th century, but stands on the site of a much older Saxon building.

**PH** Public house

**P** Car parking

**X** Refreshments

**WC** Toilet

**!** Caution

# Out and about

There are a number of locations within Medway, where you can get closer to the estuary, its wildlife and enjoy stunning views.



## Berengrave Local Nature Reserve

From 1901 until 1931 the reserve was used as a chalk quarry, before being left derelict up until the early 1970s. Today it is home to at least 89 different species of bird and over 426 species of flora, including 83 types of fungi.

01634 337432

[www.friendsofberengrave.btik.com](http://www.friendsofberengrave.btik.com)



## Broomhill Park

This hidden gem stands upon Strood's highest hill, offering stunning views across Medway.

01634 333333

[www.medway.gov.uk](http://www.medway.gov.uk)



## Grain Country Park

Located on the eastern tip of the Hoo Peninsula, this 18-hectare site provides excellent opportunities for walking, bird watching or simply enjoying the stunning views across the Thames and Medway estuaries. Access is by car or limited bus service.



## Northward Hill

Standing on a ridge high above the north Kent marshes, it offers excellent views across the adjoining Thames Estuary. The reserve is the RSPB's oldest, established in 1955.

01634 222480

[www.rspb.org.uk/reserves](http://www.rspb.org.uk/reserves)



## Great Lines Heritage Park

The steep, south-facing slope of the Great Lines dominates the Chatham skyline and offers fantastic views towards Rochester and beyond. The site is crowned by the spectacular Royal Naval Memorial, which commemorates more than 8,500 sailors lost in the First World War. The wide expanse of grassland supports numerous species of important flora and fauna.

01634 331176

[www.chathamworldheritage.org.uk](http://www.chathamworldheritage.org.uk)



*What's in a name? Upnor – Upon the bank*



## Riverside Country Park

With stunning estuary views and attractive walks, the park is perfect for families to become acquainted with the North Kent Marshes.

01634 337432

[www.visitmedway.org](http://www.visitmedway.org)



## Ranscombe Farm Nature Reserve

Ranscombe Farm Nature Reserve, in Cuxton, is set on the North Downs of Kent with spectacular views along the Medway Valley. The reserve has more than 6 miles of footpaths, a great opportunity to explore and enjoy over 600 acres of woodlands, arable fields and meadows.

01722 342730

[www.plantlife.org.uk](http://www.plantlife.org.uk)



## The Strand

Situated by the Medway at Gillingham, The Strand is a popular location for families. Attractions include crazy golf, children's paddling pool and miniature railway.

01634 333333

[www.visitmedway.org](http://www.visitmedway.org)



## Upnor

The original high street is a charming cobbled street lined with terraced, weather-boarded houses leading down to Upnor Castle and the river.

[www.visitmedway.org](http://www.visitmedway.org)



## Key

- Waterside
- Wildlife
- Refreshments available
- On-site parking
- Parking nearby
- Great views
- Wheelchair accessible

*What's in a name? Grain (Isle of) – Sandy or gravelly shore*



# Visitor attractions

The area is home to a number of superb museums and historical buildings, many of which reflect the estuary's extensive maritime and military heritage.

## Attractions

### Dickens World

Monday – Friday: 10am - 4.30pm  
(Last admission 3pm) Closed Mondays  
from September 2012 - Easter 2013  
Weekends: 10am - 5.30pm  
(Last admission 4pm)  
01634 890421  
[www.dickensworld.co.uk](http://www.dickensworld.co.uk)

### Guildhall Museum (Rochester)

Tuesday – Sunday, 10am – 4.30pm  
01634 848717  
[www.visitmedway.org](http://www.visitmedway.org)

### Royal Engineers Museum

Tuesday – Sunday  
Phone for opening times  
01634 822839  
[www.re-museum.org.uk](http://www.re-museum.org.uk)

### The Historic Dockyard Chatham

Monday – Sunday, 10am – 6pm  
(4pm from 31 October onwards)  
01634 823800  
[www.thedockyard.co.uk](http://www.thedockyard.co.uk)



## Historical Buildings

### Fort Amherst

Parklands: Dawn until dusk  
Buildings: Phone for times  
01634 847747  
[www.fortamherst.com](http://www.fortamherst.com)

### Restoration House

Thursday and Friday, 10am – 5pm  
(June – September), phone or visit  
the website for additional dates  
01634 848520  
[www.restorationhouse.co.uk](http://www.restorationhouse.co.uk)

### Rochester Castle

Monday – Sunday, 10am – 6pm  
(April – September) and 10am – 4pm  
(October – March)  
01634 335882  
[www.visitmedway.org](http://www.visitmedway.org)

### St Mary Magdalene (Gillingham)

Phone for opening hours  
01634 850529



### Rochester Cathedral

Monday – Sunday, 7.30am – 6pm  
(Saturday, 5pm)  
01634 843366  
[www.rochestercathedral.org](http://www.rochestercathedral.org)

### Six Poor Travellers House (Rochester)

Monday – Sunday, 10.30am – 4.30pm  
(March – October)  
01634 845609  
[www.visitmedway.org](http://www.visitmedway.org)

### Temple Manor (Strood)

Saturday and Sunday, 11am – 3pm  
(April – October)  
01634 333333  
[www.visitmedway.org](http://www.visitmedway.org)

### Upnor Castle

Monday – Sunday, 10am – 6pm  
(April – September) and 10am – 4pm  
(October)  
01634 718742  
[www.visitmedway.org](http://www.visitmedway.org)



*What's in a name?* Rainham – Settlement of the ruling or powerful men



# *Festivals and events in Medway*

## **January**

### **Chinese New Year**

One of Britain's largest Chinese New Year celebrations.  
Chatham



## **March**

**Medway Festival of Steam and Transport**  
Specialist vehicles and entertainment for all.  
Historic Dockyard Chatham

## **April**

**The English Festival**  
Free family fun day celebrating English culture.  
Riverside Country Park

## **May**

**Sweeps Festival**  
May Day celebrations including Morris dancers, music and childrens activities.  
Rochester

### **Medway Barge Match**

Annual barge race.  
[www.medwaybargematch.co.uk](http://www.medwaybargematch.co.uk)  
Starting at Gillingham Pier

## **June**

### **Medway River Festival**

Boat races, ships and on-shore activities.  
Chatham Waterfront

### **Rochester Dickens Festival**

Street parades, entertainment, and costumed characters.  
Rochester

### **FUSE Medway Festival**

A free celebration of arts and creativity, from live street theatre to site-specific performances.  
Various locations



### **The Dutch are Coming**

Re-enactment and stories of the Dutch Raid of 1667.  
Upnor Castle



## **July**

### **Castle Concerts**

Four nights of great music.  
Rochester Castle Gardens

## **September**

### **Medieval Merriment**

Medieval re-enactment  
Rochester Castle

### **Heritage Open Days**

Heritage sites are open to the public for free.  
Various locations

### **Salute to the 40s**

Wartime entertainment, fashion, vehicles and a host of re-enactors.  
Historic Dockyard Chatham

### **Will Adams Festival**

Celebrate the life and works of Gillingham-born Will Adams - England's first Samurai.  
Gillingham Park

### **The Capstone Festival**

Free kites 'n' bikes event with stunt displays and workshops.  
Capstone Farm Country Park

## **October**

### **Black History month**

Celebrating diverse cultures and traditions.  
Various locations

### **Kent's Coastal Week**

[www.kent.gov.uk/coastalweek](http://www.kent.gov.uk/coastalweek)  
Various locations across Kent

## **November**

### **Bonfire and Fireworks**

Great Lines Heritage Park

## **December**

### **Dickensian Christmas**

Parades, stalls, carols, guaranteed snow and costumed characters.  
Rochester

For more information on events in Medway visit [www.whatsonmedway.co.uk](http://www.whatsonmedway.co.uk) or phone **01634 338141**.

For general information on Medway visit [www.visitmedway.org](http://www.visitmedway.org)

# Medway accommodation

## Hotels

---

### Bridgewood Manor Hotel

★★★★

Bridgewood Roundabout,  
Walderslade Woods, Chatham  
ME5 9AX  
01634 201333  
bridgewoodmanor@qhotels.co.uk  
www.qhotels.co.uk

### Holiday Inn Rochester -

Chatham ★★★★★

Maidstone Road, Chatham  
ME5 9SF  
0871 942 9069  
reservations\_rochester@ihg.com  
www.holiday-inn.co.uk

### Ramada Encore Hotel ★★★★★

Western Avenue, Historic Dockyard,  
Chatham ME4 4NT  
01634 891677  
reservations@encorechatham.co.uk  
www.encorechatham.co.uk

### King Charles Hotel ★★★★★

Brompton Road, Gillingham  
ME7 5QT  
01634 830303  
reservations@kingcharleshotel.co.uk  
www.kingcharleshotel.co.uk

### Gordon House Hotel ★★★★★

91 High St, Rochester ME1 1LX  
01634 831000  
info@gordonhousehotel.net  
www.gordonhousehotel.net

### St George Hotel ★★★★★

7/8 New Road Avenue, Chatham  
ME4 6BB  
01634 841012  
reception@george-hotel.co.uk  
www.george-hotel.co.uk

## Bed and breakfast

---

### Officers Hill B&B

★★★★★ Gold award

7 College Road, Historic Dockyard,  
Chatham ME4 4QX  
01634 828436  
gmchambers@btopenworld.com  
www.chathambandb.com

### Orchard B&B

★★★★ Silver award

11 View Road, Cliffe Woods,  
nr Rochester ME3 8JQ  
01634 222780  
enquiries@orchardcottagekent.co.uk  
www.orchardcottagekent.co.uk

### Salisbury House B&B

★★★★ Silver award

29 Watts Avenue, Rochester ME1 1RX  
01634 400182

### Cedar House ★★★★★

66 Priestfields, Rochester, ME1 3AB  
01634 324175  
info@cedarhouserochester.co.uk  
www.cedarhouserochester.co.uk

### Greystones B&B ★★★★★

25 Watts Avenue, Rochester ME1 1RX  
01634 409565  
greystonesrochester@gmail.com  
www.greystonesbandb.org.uk

### Normandy House B&B ★★★★★

143 Maidstone Road, Chatham  
ME4 6JE  
01634 843047  
david.rands@blueyonder.co.uk  
www.bedandbreakfastchatham.co.uk

### Abigails B&B ★★★★★

17 The Maltings, Rainham ME8 8JL  
01634 365427  
davidjpenfold@talktalk.net

### Churchfields ★★★★★ Silver award

6 Churchfields Terrace, St Margaret's  
Street, Rochester ME1 1TQ  
01634 400679  
info@churchfieldsbandb.co.uk  
www.churchfieldsbandb.co.uk

### The Sundial ★★★★★

18 Ranscombe Close, Strood,  
Rochester ME2 2PB  
01634 721831  
sean@company8234.freemove.co.uk

### Riverview Lodge ★★★★★

88 Borstal Road, Rochester ME1 3BD  
01634 842241  
riverviewlodgerochester@gmail.com  
www.riverviewlodge-rochester.co.uk

### The Cottage

(Awaiting grading)  
66 Borstal Road, Rochester ME1 3BD  
01634 403888  
pinkhousecottage@gmail.com

## Inns

---

### The Horseshoe & Castle

★★★★

Main Road, Cooling, Rochester  
ME3 8DJ  
01634 221691  
horseshoe.castle@btconnect.com  
www.horseshoeandcastle.co.uk

## Self catering

---

### Stable Cottages ★★★★★

Fenn Croft, Newlands Farm Road,  
St Mary Hoo, Rochester ME3 8RE  
01634 272439  
info@stable-cottages.com  
www.stable-cottages.com

### The Chimes ★★★★★

6 Hawkwood Close, Rochester,  
ME1 1HW  
01634 842923  
normachambers@hotmail.co.uk

### Decoy Farm Cottages

(Awaiting grading)  
Decoy Hill Road, High Halstow,  
Nr Rochester ME3 8SR  
01634 256185  
johnandkim@jkm-international.co.uk

## Caravan holiday park

---

### Allhallows Leisure Park

Avery Way, Allhallows, Nr Rochester  
ME3 9QD  
01634 270385  
garth.harvey@bourne-leisure.co.uk  
www.haven.com/allhallows

# Further information

## Local authority

### Medway Council

[www.medway.gov.uk](http://www.medway.gov.uk)  
01634 333333

## Visitor information

[www.visitmedway.org](http://www.visitmedway.org)  
[www.whatsonmedway.co.uk](http://www.whatsonmedway.co.uk)  
[visitor.centre@medway.gov.uk](mailto:visitor.centre@medway.gov.uk)  
01634 338141

## Ports and marine safety

### Maritime and Coastguard Agency

[www.mcga.gov.uk](http://www.mcga.gov.uk)  
0870 6006505

### Peel Ports Medway (Navigation Service)

01795 663025  
[www.medwayports.com](http://www.medwayports.com)  
[Navigation@medwayports.com](mailto:Navigation@medwayports.com)

### RNLI

[www.rnli.org.uk/seasafety](http://www.rnli.org.uk/seasafety)  
0800 3280600

### Kent Police Marine Unit

07772 226213 (Medway)

### Project Kraken

(counter terrorism hotline)  
[www.kent.police.uk](http://www.kent.police.uk)  
0800 789321

### The National Water Safety Forum

[www.nationalwatersafety.org.uk](http://www.nationalwatersafety.org.uk)  
0870 7772171

## Wildlife advice

### Natural England

[www.naturalengland.org.uk](http://www.naturalengland.org.uk)  
0845 6003078

### Environment Agency

[www.environment-agency.gov.uk](http://www.environment-agency.gov.uk)  
08708 506506

### Kent Wildlife Trust

[www.kentwildlifetrust.org.uk](http://www.kentwildlifetrust.org.uk)  
01622 662012

### Kent Police Rural and Environmental Crime

01622 654007

### RSPB

[www.rspb.org.uk](http://www.rspb.org.uk)  
01795 665969

## Wildfowling

### Kent Wildfowling and Conservation Association

[www.kentwildfowlers.co.uk](http://www.kentwildfowlers.co.uk)  
07836 771715

## Boating

### Medway Yachting Association

[www.medwayya.co.uk](http://www.medwayya.co.uk)

### Royal Yachting Association

[www.rya.org.uk](http://www.rya.org.uk)

## Fishing

### Angling Trust

[www.anglingtrust.net](http://www.anglingtrust.net)  
0844 7700616

## Kent and Essex IFCA

[www.kentandessex-ifca.gov.uk](http://www.kentandessex-ifca.gov.uk)  
01843 585310

## Tidal information

A copy of the official tide table can be bought for £2, from Peel Ports – 01795 596596

<http://easytide.ukho.gov.uk>  
[www.bbc.co.uk/weather/coast/tides](http://www.bbc.co.uk/weather/coast/tides)

## The Medway Swale Estuary Partnership

The partnership's work is centred on raising awareness of the estuary's environmental, economic and social importance, managing competing demands and increasing knowledge of the estuary through research, publications and educational activities. If you would like to find out more about the partnership, then visit [www.msep.org.uk](http://www.msep.org.uk) or email [msep@medway.gov.uk](mailto:msep@medway.gov.uk)

## Suggested further reading

**Walking the Saxon Shore Way through Medway** (PDF available from [www.msep.org.uk](http://www.msep.org.uk)) – Medway Council/MSEP

**The Saxon Shore Way** – Alan Sillitoe and Fay Godwin – ISBN 0091514606, Hutchinson (out of print)

**The Medway Prison Hulks** by Keith Gulvin – ISBN 1908067004, Estuary Books No1 (published by [www.I-13.org](http://www.I-13.org) priced £9.99)

**Waterlog** by Roger Deakin – ISBN 0099282550, Vintage

**River Medway & Swale** by Robert Simper – ISBN 0951992775, Creekside Publishing

**Salt Marsh & Mud** by Nick Ardley – ISBN 9781848684911, Amberley Publishing

**Typical Birds of the Medway & Swale** (available free from [www.msep.org.uk](http://www.msep.org.uk))



Published by: Medway Council 2012

Text: MSEP

Photography: MSEP, Robert Canis ([www.robertcanis.com](http://www.robertcanis.com)), RSPB

Map courtesy of Medway Yachting Association

While every care is taken in compiling this publication, neither Medway Council nor its servants or agents can accept any liability whatsoever for any incorrect statement contained herein, nor any omission.

G7126 Designed by Medway Council's Communications Team  
[www.medway.gov.uk/communications](http://www.medway.gov.uk/communications)



*Medway*  
COUNCIL  
*Serving You*