



MYA

MEDWAY YACHTING ASSOCIATION

2011
YEARBOOK

In this edition:

- Marine Conservation Zones
- Cruising Safety Tips
- RYA SE Region
- The London Array
- Prize Draw
- River Walks

Representing
leisure boating
on the Medway
and Swale

Includes:

UKHO Tide Tables
for Sheerness 2011



Royal Harbour Marina

SAIL IN & SEE US



Have you considered a permanent mooring at the
Royal Harbour Marina, Ramsgate?

- Kent's premier marina offering safe mooring 365 days a year with superb facilities
- 24 hour security, CCTV and foot patrols
- 40 tonne boat hoist
- Good road access

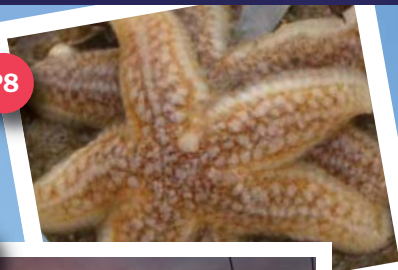
Please visit our website at www.portoframsgate.co.uk for our fees and charges

Contact us on: 01843 572100 or email portoframsgate@thanet.gov.uk

mya 2011

Inside

P8



P14



P16



P45



- 02 Review 2010
- 03 Officers of the MYA
- 04 About the MYA
- 07 From the Editor
- 08 **SPECIAL FEATURE**
Marine Conservation Zones
- 11 Cruising Safety Tips
- 13 Club Open Events
- 14 **SPECIAL FEATURE**
RYA South East Region
- 16 **SPECIAL FEATURE**
London Array
- 19 **EXCLUSIVE PRIZE DRAW**
Abigale's Samphire Bitter
- 21 Tide Tables 2011
- 25 Medway Cruising Club
- 26 Top Tips on Selling a Boat
- 29 Club Listings 2011
- 45 **SPECIAL FEATURE**
Exploring the Estuary
- 47 Kingsferry Bridge
Transiting Procedure
- 48 Other Agencies

EDITOR: Nick Stewart
DESIGN: www.stewart2.com
T: 01634 880705 E: cherry@stewart2.com

www.medwayya.co.uk

Membership of the MYA continues to increase with the addition of a couple of small boat yards and training establishments. The diversity of the MYA's membership puts it in a unique position to tackle the issues affecting all leisure users of the River Medway and Swale and the association provides a useful forum for it's members to interact with one another, share best practice and obtain advice and assistance where needed.

Review 2010

The possible closure of the All Tide Landing at Queenborough is of great concern to the MYA. Faced with spiralling maintenance costs and a decreasing volunteer force, coupled with the loss of financial support from the local council and the very real possibility of damage, theft or physical assault by local trouble makers, Queenborough Yacht Club are seriously considering whether they can continue to provide this valuable facility. It is hoped that, through contacts introduced via the MYA, sources of funding can be found that will enable changes to be made that would allow the All Tide Landing to be kept open.

The MYA is also lobbying members of Medway Council with a view to improving the facilities available to visitors arriving by boat to visit the Medway Towns, which we see as being ideally placed to attract visitors wanting to visit the Olympics in 2012.

The problems with the operation of the Kingsferry Bridge appear to be diminishing. But please continue to report any incidents of: yachts being kept waiting without good reason; yachtsmen not receiving a response from the bridge keeper; being given unreliable information; or, the bridge not

being fully lifted, to Medway VTS, as they are the authority best able to establish whether the problems stem from individual operators or other factors. The transiting procedure and contact details for Medway VTS can be found on page 47.

The issue of the nuisance Jet Skis, especially in Gillingham reach, has also been addressed, largely due to the intervention of PCSO Michael Dann, and it is hoped that the dialogue that has been started with the Jet Ski users will help to solve the problems that have dogged the area for the last few years.

The Marine Watch Scheme continues to be a successful partnership between the MYA, the Marine Policing Unit and Medway Police. Michael Dann has become a very familiar face around the boat clubs and marinas in the Medway area and as well as his involvement with the PWC issue, he has been instrumental in organising a second Marine Safety and Security evening, hosted by Rochester Cruising Club in May, and a Community Engagement Meeting, involving members of the marine community, Medway Police and Medway Council that was held at Strood Yacht Club.

The MYA Yearbook and website remain a vital source of information for everyone involved in boating on the Medway and Swale. Each year the MYA yearbook is being more widely distributed, and the website is receiving a good number of 'hits', both of which we hope are bringing more visiting boats to the area. The additions of a Facebook page and Twitter account have also broadened the MYA's exposure and ability to communicate with its members.

The MYA Medway Keelboat Regatta is being rested until a format can be found that meets the needs of keelboat racers. The 2010 MYA Medway Dinghy Regatta, on the other hand, attracted over 80 entrants from 20 different clubs located across the length and breadth of the country. The engraving on the trophies has been brought up-to-date and long-overdue repairs have also been carried out. This event continues to be successful thanks both to its hosts, Wilsonian Sailing Club, and their sponsors MTS.

Through its association with the RYA the MYA aims to keep its membership updated on major issues that have the potential to adversely affect the use and enjoyment of the waters of the rivers Medway and Swale. Current issues include the Marine and Coastal Access Bill, which has paved the way for both waterways to become part of a massive marine conservation area and 'Boris Island' continues to be a threat that we cannot afford to overlook.

Meetings during 2010 were held at Wilsonian Sailing Club, Conyer Cruising Club, Medway Towns Rowing Club and Medway Yacht Club. I thank them for their hospitality and look forward to visiting more clubs that have not yet hosted MYA meetings during 2011.

CHAIRMAN

Mrs Jenny Deacon
1 Bodiam Court Hart Street
Maidstone Kent ME16 8LZ
T: 01622 202654
E: chairman@medwayya.co.uk

VICE CHAIRMAN

Mr Stuart Bradley
46 Bower Road Hextable
Swanley Kent BR8 7SE
T: 07714 958745
E: vice@medwayya.co.uk

HONORARY TREASURER

Mrs Liz McVeigh
15 Watts Avenue Rochester
Kent ME1 1RX
E: treasurer@medwayya.co.uk

HONORARY TROPHY SECRETARY

Mr Ken Waller
Tanglewood, Yester Park
Chislehurst Kent BR7 5DG
T: 0208 467 4404
E: trophies@medwayya.co.uk

HONORARY PUBLICITY OFFICER

Mr Nick Stewart
25 Davy Court
Rochester Kent ME1 1AE
T: 01634 880705
E: publicity@medwayya.co.uk

REPRESENTATIVE TO RYA SE COMMITTEE

Mr Tom Sims
Tekei, Grassmere Road,
Orpington, BR6 8HB
T: 01689 854627
E: tomsims775@btinternet.com

As set out in our Constitution include:

"To watch over all matters that are of common interest to leisure users of the waters of the River Medway and Swale" **and;**

"To take such other steps as it may decide are in the best interests of waterborne sports and pastimes in the area"

About the MYA



The MYA includes in its membership over thirty

Clubs and other organisations with some 4,000 members who regularly use the waters of the Medway and Swale for recreational purposes.

Between them, these Clubs and organisations offer a wide diversity of opportunities for leisure boating on the Medway and Swale, ranging from water-skiing and powerboat racing to dinghy racing, yacht racing, motor cruising, rowing and canoeing.

Strategically located

The Medway estuary and the Swale extend from Whitstable on the East Swale past Garrison Point at Sheerness to Allington Lock near Maidstone. Strategically located in North Kent, they provide a wide network of sheltered tidal waters which are ideal for all sorts of water sports, whether competitive events or cruising with the possibility of overnight anchorages in quiet creeks. Above Allington Lock the non-tidal waters of the upper Medway offer excellent motor cruising through the Kent countryside.

In spite of the commercialisation of parts of the estuary, its salt marshes and diverse range of migrating birds, have been given

international status as an important area for ecological and wildlife conservation.

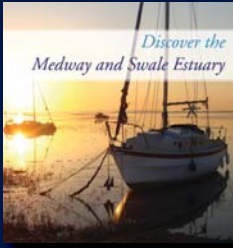
At the same time the estuary has great cultural and historic interest. Rochester Cathedral dates from 604 and Rochester Castle, one of the finest of its kind, dates from the early years after the Norman Conquest. Rochester was besieged by the Vikings in 885. Further down river Chatham Historic Dockyard is developing as a heritage centre, reminding us of its days as a strategic base for the Royal Navy.

The Medway and Swale have good communications by rail and by motorway with most of Kent and involve a journey of perhaps an hour from much of South London. They provide an excellent base for short cruises to various places of interest on the East Coast, while for those who wish to go further afield the coasts of northern France, Belgium and Holland are within reach. Every summer sees cruisers from these countries visiting us.

What are we there for?

First and foremost we believe that through the MYA we should use our best endeavours to encourage greater participation in all types of recreational waterborne activities on the Medway and Swale. We see ourselves as the voice of

New River Guide



A new guide to the Medway and Swale Estuary, looks set to be an invaluable aid for those looking to explore and make the most of this stunning area.

People have lived and worked on or around the estuary for thousands of years. As a result it is rich in both archaeological and historical remains including: Prehistoric droveways (used to move cattle); Roman pottery kiln sites; Anglo Saxon fish traps (known as Snowt Weirs) and numerous military installations, going as far back as the 11th century.

Today the estuary is of national and international significance, both economically and environmentally. As a major trading route, it is home to several important shipping terminals, handling a wide range of products and raw materials. Since 1995 it has also played a key role in the UK's energy supply network, with power stations at Kingsnorth and Grain.

leisure boating on the Medway and Swale, representing the common interests of all who use our waters for leisure purposes and arguing for the maintenance and enhancement of facilities and opportunities for water sports of all kinds.

We believe that the promotion of responsible and seaman-like conduct among recreational users of the waters of the estuary is a key objective. We believe that those who go afloat should do so in a manner which is safe for themselves and considerate for others and for the environment.

Despite this industrial landscape the estuary continues to support an impressively diverse ecosystem, providing the perfect habitat for thousands of breeding and wintering birds. These birds are so important that the estuary is protected by both national and international designations.

Whether you are looking relax in the glow of incredible beauty, or get active on water or land, the Medway and Swale Estuary has something for all ages. Simply respect the delicate balance of nature and the area will continue to inspire future generations. Happy exploring!

NOTE: The MYA has donated funding to the Medway and Swale Estuary Partnership to help produce the new guide for the Medway and Swale Estuary. The guide will be available in hard copy and pdf format at the end of February 2011 from our website and the MSEP website and office - details on page 45.

Through the Medway Estuary and Swale Management Plan we have signed up to the principle of 'sustainable development'. The estuary is a precious resource with many competing demands on it. While wishing to promote the reasonable use of the Medway and Swale for recreational use and to resist unreasonable restrictions on leisure boating, we also recognise the importance of caring for the environment and will work with other agencies to ensure its protection. We are trusted as an established organisation to help strike a balance between competing needs.



Swale Marina Services Ltd
t: 01795 521562
f: 01795 520788
m: 07809 436666
e: swale.marina@virgin.net
www.swalemarina.co.uk

Situated on the beautiful north Kent coast with good transport links Swale Marina is a great place to be

Services

Osmosis Treatments
Interspray Centre
Boat Repairs
Wilkinson Sails
Haul and Wash
Brokerage



Features

New Licensed Clubhouse
Covered Storage
Winter Ashore Storage
Slipway
32 Ton Travel Hoist
30 Ton Crane
Site Security
Pontoon Mud Berthing

Swale Marina Conyer Wharf Teynham Kent ME9 9HN

Welcome to the 2011 feature packed edition of the MYA Yearbook and to another great season on the water!

From the Editor

As many of you may be aware, work on the offshore part of the London Array wind farm project starts this year. This massive project will not only be of future benefit to the generation of energy but, will also affect navigation from this year forward, so please sign up to our Facebook site or bookmark our website to keep up-to-date with the Notices to Mariners which we will post as soon as we receive them.

The Marine Conservation Zones project also continues apace. Our feature explains what it's all about and how it could affect the way we go about our water based activities in the future, so please take note and keep an eye on their website as the final outcome could have a direct impact on you!

Next year sees London host the 2012 Olympic Games. The potential impact of thousands of visiting boats from our immediate European neighbours and from countries further afield, could become a serious problem especially as the Port of London Authority (PLA) are only allowing boats with pre booked moorings in and out of the Thames. So what happens to boats that are turned away? Currently, there is limited space available in our Medway marinas, but no public moorings, limited anchorage areas and only two operational public access points to get on and off the water, just above Rochester Bridge and at the Strand (which is in a very poor state). Also of concern are the security issues. With border control policing stretched to the limit, human, drugs and arms smugglers, professional thieves and terrorists, may well attempt to access the UK by boat, cunningly concealed within the visiting armada.

To address these issues, the MYA recently met with representatives from the RYA, Medway Ports, the Marine Police Unit and Medway Council to discuss what to do. We were immediately informed that due to lack of funds, the build and /or repair to the current public access points and laying of visitors moorings on the river will not happen anytime in the near future.

Whatever strategy we agree to, and it could well follow the PLA approach, it will be imperative that the London Organising Committee gets the communication out loud and clear at all levels, nationally and internationally to substantially reduce a potential armada of frustrated sailors with limited or no access to shore, and go some way to limit possible security threats. It's a great shame that our public river facilities are in such a state - and a missed opportunity for business and tourism?

The yearbook continues to be read far and wide with some very flattering feedback - we ran out of copies last year! Traffic to the website continues to build and our new FREE downloadable charts of the River Medway and Swale are a great hit!

Before I sign off, a very big thank you to all our advertisers and contributors without whom this publication and the website would not be possible. And for all real ale fans, don't forget to enter the prize draw!

Thanks for all your support, enjoy reading the MYA Yearbook 2011 and have a great sailing season!

Nick Stewart - MYA Publicity Officer
publicity@medwayya.co.uk.

Marine Balanced Seas

Delivering Marine Conservation Zones in the South-East

Conservation Zones

in the South East

The Medway and Swale estuaries lie within the area covered by Balanced Seas, a project working with those who use the sea for their livelihood or leisure around South-East England. It is one of four regional projects in England established by Natural England and the Joint Nature Conservation Committee (JNCC) to develop recommendations for Marine Conservation Zones (MCZs) which are to be established in accordance with the 2009 Marine and Coastal Access Act. **Feature by Sue Wells and Phil Darrell-Smith**

Unlike the European Marine Sites already designated for the Medway and Swale which were identified on scientific grounds alone, the recommendations for MCZs will take socio-economic issues into account. The recommendations are therefore being developed by a Regional Stakeholder Group (RSG) which has wide cross-sectoral representation, including commercial fishing, yachting and other water sports, recreational sea angling, nature conservation interests, ports, renewable energy and other industries and interests.

Each member of the RSG works on behalf of the interests of their sector. The process involves a conscious effort to minimise any socio-economic impact although the principles, criteria and conservation targets for the UK MPA network that have been set out in the Ecological Network Guidance, a document prepared by Natural England and JNCC must nevertheless be met. The RSG is supported by the Balanced Seas Project Team, which is based at the University of Kent and responsible for ensuring that all

relevant ecological and socio-economic information has been collated and mapped. Data has been obtained from a wide range of national and local sources, and is complemented by information gathered by the Project Liaison Officers from the fisheries and recreation sectors through interviews, over 700 of which have been undertaken.

Three Local Groups act as advisory bodies for the RSG and provide opportunity for the wider stakeholder community to contribute to the RSG's work. So, for example, members of the Essex/Thames/North Kent Local Group include individuals with knowledge of the Medway and Swale, and organisations such as the Medway Swale Estuary Partnership. Members of all the stakeholders groups are expected to provide feedback to, and receive comments and information, from their wider sectors.

Through the project, both the Medway and Swale Estuaries have been identified as particular areas of interest. This does not



mean that they will necessarily become MCZs, but that they have been highlighted for further consideration. They were put forward because of the important ecological features that occur there and that are not yet protected by existing designations such as the European Marine Site and SSSIs. These include spawning and nursery grounds for bass, smelt, sole and herring which are so key for the fishing industry, and populations of native oysters and blue mussels.

It is important to understand that many activities will be able to continue within an MCZ. The protection levels required will be identified on a site-by-site basis through meetings of the RSG and the Local Groups. The activities allowed will vary depending on the features for which the MCZ is designated and the types and intensity of activity that the features are sensitive to: activities will not be restricted unless they damage the designated species or habitats. There is therefore much discussion to come in relation to the Medway and Swale, as existing socio-economic activities, such as ports, fisheries and recreation, must be taken into account. Furthermore, the recommendations will be accompanied by an impact assessment, prepared by the project economist with the help of the stakeholder groups, which will contain an analysis of the socio-economic costs and benefits of each proposed MCZ.

The RSG has so far submitted two progress reports to the national Science Advisory Panel, which provides scientific support and

advice. The Essex, Thames and North Kent Local Group has met several times to provide input and will continue to provide advice and assistance. The project is now moving into a series of more localised meetings to discuss individual sites. The third progress report will be submitted at the end of February and will be on the website in early March.

The final recommendations of all four regional projects will be made at the end of August this year. These will be collated by Natural England and JNCC and submitted to Defra at the end of November. There will subsequently be a public consultation before designation of the MCZs in 2012.

All sea users are encouraged to get involved in the Balanced Seas MCZ project:

- **Contact your sector representative** on the RSG or one of the Local Groups; information about these groups can be found on the website.
- **Sign up** to receive the newsletter and other updates and information about the project by emailing balancedseas@kent.ac.uk.
- **Visit www.balancedseas.org** for all the latest information, including stakeholder representatives, meeting reports, and project guidance.
- **Contact the liaison officers: Jules Martin** j.p.b.martin@kent.ac.uk, 07584 020752 or **Amy Pryor** a.e.pryor@kent.ac.uk, 07584 020771.

GARMIN®

Making navigation easy

www.garmin.co.uk



SWALE MARINE

Swale Marine Electrical

The Old Stable

North Road

Queenborough

Kent ME11 5EN

Call 01795 580930

Email: swalemarin@aol.com

Web: www.swalemarine.com

CHARTPLOTTERS • RADAR • INSTRUMENTS • VHF • AUTOPILOTS • WIND SENSORS • FISHFINDERS • HANDHELD

cruising safety TIPS

SAFETY FEATURE

Feature by Mike Goodwin
Skilltrack - Chief Instructor

Check the weather and tides for the expected duration of the trip - It is frequently difficult to predict how long a journey will take, given that wind conditions may change. The Isle of Sheppey sailing club website has excellent local meteorological information www.iossc.org.uk

Write a passage plan including tides, buoyage, navigational hazards and pilotage information. Try to keep it as simple possible. This will give you direction.

Take waterproof clothing and lifejackets for everyone aboard. Even on a hot and sunny day, it is always cooler on the water than on land.

Know your engine Check oil and open sea cock for water to cool engine. Ensure you have the basic spares: belts, filters, tools, spare oil and adequate fuel.

Carry paddles or oars in case of engine failure.

Ensure you have up-to-date charts, navigation tools, a hand bearing compass and a current almanac, even if you do have a state-of-the-art plotter.



Give a safety brief to the crew. Show them the location and correct use of: flares, VHF Radio, life raft, EPIRB, SART and fire extinguishers.

Know the limitations of your vessel and crew.

Have a pre packed emergency grab bag including the following; a spare handheld GPS and VHF radio any essential medication, spare spectacles and a torch.

Ensure a responsible person ashore knows where you going and what time you are expected back. For example you may choose to inform the VTS or coastguard, as well as someone you know. Whoever you tell remember to tell them when you return.

If you are in doubt about safety on the water, the RYA shore based courses provide the necessary information. For those just starting out the Day Skipper theory, VHF radio courses and Sea Survival will give you a good grounding in safety at sea. Enjoy your cruising!

SPONSORED BY MTS CLEANING SERVICES

MYA DINGHY

REGATTA



WILSONIAN SAILING CLUB 2-3 JULY 2011

for further information please visit www.wilsoniansc.org.uk

Admiral's Cruise Sunday 3 July 2011

Organised by **Rochester Cruising Club** on behalf of
The Mayor of Rochester, Admiral of the River Medway.

All Boatowners are very welcome to participate in the down
river cruise to the **Richard Montgomery**, mooring for lunch in
The Swale or **Stangate Creek** and then returning in the evening.



For further information please visit www.rochestercc.co.uk

mya 2011

Club Open Events

CLUB KEY

CCC Conyer Cruising Club
GM Gillingham Marina
HCC Hollowshore Cruising Club
HNYC Hoo Ness Yacht Club
IOSSC Isle of Sheppey Sailing Club
KSA Kentish Sailing Association
MCC Medway Cruising Club

MTRC Medway Towns Rowing Club
QRC Queenborough Rowing Club
QYC Queenborough Yacht Club
RCC Rochester Cruising Club
USC Upnor Sailing Club
WSC Wilsonian Sailing Club

EVENT CALENDAR

MARCH 2011

27 Medway Head of the River Race - MTRC

APRIL 2011

9-10 Boat and Chandlery Fair - GM

MAY 2011

28-30 Dart Nationals - IOSSC

JUNE 2011

4-5 Squib Eastern Champs - MYC
10-12 Gala Weekend - MCC
11-12 Multihull Weekend - HNYC
17-19 Swale Regatta - CCC/HCC/QYC
18-19 Sail East - MYC
25-26 Jeanneau Owners Weekend - MYC

JULY 2011

2-3 MYA Dinghy Regatta - WSC
3 Admiral's Cruise - RCC
9-10 Lark Open - MYC

10 Medway Marathon - MYC
17 Wilsonian Grand Prix - WSC
22-24 MYC Regatta - MYC/USC

AUGUST 2010

6 Swale Smack & Sailing Barge Match - KSA

SEPTEMBER 2011

3 Round the Island Race - IOSSC
10-11 Wayfarer Fairway Trophy - MYC

NOVEMBER 2011

6 November - 18 December
Wilsonian Open Winter Series - WSC

JANUARY 2012

1 Chilly Willies Open Handicap Race - WSC

FEBRUARY 2012

18-19 Hoo Freezer - HNYC



The Royal Yachting Association has changed considerably in its 135 years existence to become the largest representative body in the UK for most types of boating. It is very much a membership organisation, with over 100,000 personal members and more than 1,000 affiliated clubs and commercial training establishments.

So what is RYA SE Region?

What is it that we do and why should you consider joining the RYA?

Feature by Tony Rowe • Image by Tom Sims

Many sailors get their first exposure to 'the RYA' through one of our internationally recognised training courses. Our training portfolio seeks to give people at every level the skills and confidence they need to enjoy their boating in a safe and responsible manner. We currently have 23,000 instructors, many of whom are 'ordinary club volunteers' who form the backbone of this extensive training programme.

The RYA is the body recognised and funded by Sport England to promote sailing to improve the health of the nation. This funding provides both the infrastructure and programmes to bring more people into the sport. We have a core team of around 150 professional staff, mostly located in modern Headquarters at Hamble near Southampton, but also including Regional Development

Officers and others who work extensively with clubs across the country including clubs belonging to the MYA. Activities include; club development, youth sailing, membership and finance workshops and club training support.

Complementing the professional staff are hundreds of volunteers countrywide, who have roles such as Regional Cruising Representatives, Racing Rules and Race Management Advisers and others who assist the less fortunate go sailing with Sailabilty, the RYA's Charity, which enables 23,000 disabled people to go sailing annually. There are also formal 'Regional Organisations' such as the SE Region in Kent and Sussex which supports the central organisation by focusing on local Club's needs and the immediate cruising area.

Much of the RYA and Regional Committee activity is spent representing the sport on numerous Government or other official agency bodies, ensuring that the voice of 'boating' is heard when new legislative programmes are being developed or when local consultative bodies are proposing changes. The scale of the RYA with its 100,000 plus members and clubs gives it a voice in government circles larger than many other sports, which is important when influencing future legislation or generating funding to develop the sport.

As an example when the recent Marine Bill was moved through Parliament, the RYA lobbied on behalf of all watersports enthusiasts and is now heavily involved at a local level working with the project teams proposing Marine Conservation Zones that resulted from the bill. There is now a specific MCZ 'local group' with RYA and MYA involvement, covering the Thames estuary and adjacent Essex and Kent coasts with considerable focus on the Medway itself and the Swale. Other issues involving the RYA include: e-borders and wind farms. In each case, the RYA (together with industry partner BMF) identifies the relevant politicians, carefully scrutinises proposed legislation and argues the case for recreational boating.

Locally, many regional volunteers attend meetings held by the PLA, river basin management authorities, harbour bodies and Coastguard consultative committees. The Regional Cruising representative Monitors cruising issues for the region and interfaces with Hamble to ensure that important issues that might impact the regional cruising sailor don't get lost.

The SE Regional organisation also runs 4 fleets of dinghies with trailers - 6 Oppies, 6 Teras, 6 Toppers and 3 Fevas for hire by clubs or other organisations to help train

children and expand the sport. Many clubs use these boats to supplement their own for activities such as their 'Cadet weeks' in the summer. Details of how to hire are available on the RYA website along with all the national and SE Regional news <http://www.rya.org.uk/regions/southeast/Pages/default.aspx>

Perhaps the most exciting prospect for the RYA in the near future are the opportunities created by the 2012 Olympics (though note that contrary to the belief of many, the RYA is not running the Weymouth Sailing event which is being run by the London Olympics Organising Committee). The RYA has managed the most successful national sailing team at the last 3 Olympic regattas, winning double the number medals of the next best nation in China. Since 2008 Skandia Team GBR, as the team is known, has continued to build strength in depth winning countless medals at World Cup events and major championships. However, the real benefit of a domestic Olympics lies in bringing more people into the sport and inspiring existing boaters onto the water more often - here the RYA is working on a programme of activity aimed at getting as many people as possible involved.

As well as being the interface with government that aims to safeguard the boating that you enjoy, the RYA provides its members with support, advice and a range of benefits appropriate to the type of boating they enjoy. It is respected for its legal and cruising advice, either through its website www.rya.org.uk (which is the biggest boating information website in the UK) or by phone or email. This is supported by a range of newsletters that focus on the issues of the day. Add in an increasing list of offers and discounts from across the boating spectrum and the economics of membership start to make sense.



London Array is arguably the most widely known UK offshore wind farm. Its sheer scale and proximity to Greater London mean it's often referred to by politicians and in the press. At 1GW, the project is currently the world's largest consented wind farm and could eventually power up to 750,000 homes - about a quarter of Greater London - and reduce harmful CO² emissions by 1.4 million tonnes a year. So it'll make a big difference to the environment as well as helping provide a reliable electricity supply to south east England.

London Array

Harnessing the power of offshore wind

The London Array is arguably the most widely known UK offshore wind farm. Its sheer scale and proximity to Greater London mean it's often referred to by politicians and in the press. At 1GW, the project is currently the world's largest consented wind farm and could eventually power up to 750,000 homes - about a quarter of Greater London - and reduce harmful CO₂ emissions by 1.9 million tonnes a year. So it'll make a big difference to the environment as well as helping provide a reliable electricity supply to south east England.

The project was born in 2001, when a series of environmental studies in the outer Thames Estuary confirmed the area is a suitable wind farm site. Two years later, the Crown Estate gave London Array Ltd a 50 year lease for the site and cable route to shore. Planning consent for a 1GW offshore wind farm was granted in 2006, and permission was granted for the onshore works in 2007.

The wind farm will be located more than 20km (12 miles) from the Kent and Essex coasts in the outer Thames Estuary. The site is one of three areas within the estuary that the Government has earmarked for offshore wind farm development. The wind turbines will be built in an area of around 245km² on and between two sandbanks, Long Sand and Deep Knock and in waters up to 25m deep. Phase 1 will cover 100km². The site is bounded to the west by Black Deep, the main approach to the Port of London, and to the south by the approaches to Fisherman's Gat. The water depth increases quite quickly to the east of the site, into an area used by shipping. However, there are no major shipping channels within the wind farm site itself, and Long Sand and Deep Knock provide natural barriers along two sides.

The turbines will be arranged in rows and columns aligned according to the prevailing south-westerly wind. The turbines will

be placed 650m to 1,200m apart and connected to each other and to the offshore substations by array cables buried in the seabed.

The first 630MW phase consists of 175 turbines and two offshore substations. Phase One will be connected by four undersea cables from the offshore substations to a new onshore substation at Cleve Hill, on the north Kent coast. Construction on Phase One will begin in early 2011 and is scheduled to be complete by the end of 2012. Further build is then dependent on further environmental studies.

Keeping the shipping and fishing industries informed

We're working closely with local and national organisations to minimise the London Array's impact on shipping activities in the outer Thames Estuary during pre-construction, construction and operations. The update notices will include details of our current activities and whereabouts in the Estuary we'll be working, as well as information about the vessels being used.

We'll issue the notices monthly before offshore construction starts, and every week once construction is underway. An information flyer for mariners is available from our website.



Safety Zones

During the construction phase of the wind farm, an application has been submitted for Safety Zones around installation vessels and installed structures. These include a 500m Safety Zone around all installation vessels and a 50m Safety Zone around each turbine and substation structure upon installation. All vessels are requested to respect the Safety Zones which as well as reducing the risk of collision damage will provide protection to the installation vessels, the export cables and the wind turbine structures.

Vessels

Construction vessels will exhibit the appropriate signals for day and night. Some vessels may have anchors and cables extending out to 500m and possibly be using diving services. Various tugs and barges will be in the vicinity of the construction site and may be restricted in their ability to manoeuvre. Crew boats will be transporting members of the workforce to and from Ramsgate and other ports within the estuary and other construction vessels will be transiting between the wind farm and ports within the estuary.

For further information please contact:

Joanne Haddon
London Array Floor 7,
50 Broadway, London, SW1H 0RG
Tel: 0207 152 4626 or visit our website at
www.londonarray.com

Picture DONG Energy A/S

MEDWAY WATERSPORTS CENTRE

Based on the river at Gillingham Strand, and a non-tidal lake at Cliffe, the experienced teams at Medway Watersports Centre are dedicated to providing affordable and safe training in every aspect of water activities. Operating all-

year round, including weekends, we also offer courses for those who prefer to stay on land including: rock climbing (on a real rockface!), archery, and cross-country pursuits such as cycling, walking and orienteering.

Courses for adults and young people include: DINGHY SAILING, POWERBOAT, I.O.C.C., HOLIDAY PROGRAMMES, C.E.V.N.I.



For further information and booking forms call **01634 338754** or visit **www.medwaywatersportscentre.org**



Medway Bridge Marina Ltd



“an enviable reputation for supplying all services to the boating enthusiast”

- New Boat Sales
- Brokerage
- Marina Facilities
- Outboard Engines
- Servicing
- 200 Berth marina
- Trained, experienced staff
- Established for over 35 years
- A professional full brokerage service
- RYA Training Centre



T 01634 843576 F 01634 843820 www.medwaybridgemarina.co.uk info@medwaybridgemarina.co.uk

Medway Bridge Marina Ltd Manor Lane, Rochester Kent ME1 3HS

**EXCLUSIVE
Prize Draw**

Win a box of Samphire Bitter!

The Abigale Brewing Company is a brand new East Kent micro-brewery dedicated to producing top quality drinking bitters for lovers of handcrafted Kent ales. We have two 17 pint boxes of Samphire Bitter to give away. If you want to be a winner, email your name and address to publicity@medwayya.co.uk

Come and visit our shop at:
Abigale Brewing Company Limited
Unit 4 Javelin Enterprise Park
Javelin Way Ashford Kent TN24 8DE
Call 01233 661310 or visit
www.abigalebrewing.co.uk

PRIZE DRAW 30th June 2011. One entry per person.
All entrants must be at least 18 years of age. Prizes to
be collected from Abigale Brewing Company Limited.



The tide waits for no man!

Deep water moorings at Queenborough, Isle of Sheppey
offering great estuary sailing



A range of moorings are available within Queenborough Harbour on the Isle of Sheppey. We have vacancies for sailing and motor vessels up to 10 Meters in length.

Situated in the Swale, the moorings are in a sought after position and are well located close to the Thames and Medway estuaries.

Moorings are available on an annual, summer or winter only basis. Deep water moorings start from £531 for the Summer 2011. Summer moorings run from the 1st April - 30th November inclusive.

The mooring fee includes the use of the scrubbing off berth, a place in the dinghy

park (subject to availability), launching a vessel from the Causeway and VAT.

Visitors facilities are also offered, which include dedicated Yellow Visitors Buoys. Fresh water is available from the head of All Tide Landing, whilst toilets and shower facilities are located within the adjacent Queenborough Park



For mooring availability please contact the Harbour Office on (01795) 662051. To make an application or to enquire about a current application please call Swale Borough Council on 01795 417212.

Further information is available on the Council's Website at www.swale.gov.uk or you can email the Harbour Office at harbour@swale.gov.uk



ENGLAND — SHEERNESS

LAT 51°27'N LONG 0°45'E

TIME ZONE UT(GMT)

TIMES AND HEIGHTS OF HIGH AND LOW WATERS

YEAR 2011

JANUARY				FEBRUARY				MARCH				APRIL			
Time	m	Time	m	Time	m	Time	m	Time	m	Time	m	Time	m	Time	m
1 0311	1.4	16 0252	1.6	1 0531	1.0	16 0439	1.0	1 0413	1.2	16 0303	1.3	1 0531	0.9	16 0450	0.6
SA 0935	5.2	SU 0909	4.7	1133	5.4	1054	5.3	1023	5.1	0920	5.5	1134	5.5	1056	5.7
SA 1558	1.2	SU 1532	1.5	TU 1741	1.2	W 1703	1.1	TU 1629	1.4	W 1535	1.4	F 1731	1.1	SA 1703	0.9
2213	5.2	2149	4.9	2352	5.3	2319	5.4	2244	5.1	2153	5.1	2344	5.4	2312	5.7
2 0425	1.2	17 0402	1.4	2 0621	0.8	17 0540	0.7	2 0518	1.0	17 0415	0.9	2 0606	0.8	17 0547	0.4
1042	5.3	1017	5.0	1220	5.5	1147	5.7	1118	5.4	1029	5.4	1210	5.6	1145	5.9
SU 1700	1.1	M 1632	1.3	W 1823	1.1	TH 1757	0.9	W 1723	1.2	TH 1637	1.1	SA 1806	1.0	SU 1757	0.7
2312	5.3	2249	5.2					2333	5.3	2252	5.4			2359	6.0
3 0532	1.0	18 0501	1.1	3 0034	5.5	18 0007	5.7	3 0603	0.8	18 0519	0.6	3 0018	5.5	18 0636	0.3
1139	5.5	1115	5.3	0701	0.7	0634	0.5	1202	5.8	1124	5.8	0635	0.8	1230	6.0
M 1752	1.1	TU 1724	1.1	TH 1301	5.6	F 1235	5.9	TH 1802	1.1	F 1733	0.9	● 1838	0.9	M 1846	0.6
		2341	5.4	● 1857	1.0	O 1845	0.7			2341	5.7			O	
4 0002	5.4	19 0556	0.9	4 0111	5.5	19 0051	5.9	4 0013	5.5	19 0614	0.4	4 0049	5.6	19 0044	6.1
0620	5.9	1205	5.6	0736	0.7	0723	0.3	0639	0.7	1211	6.0	0705	0.7	0720	0.3
TU 1229	5.6	W 1813	0.9	F 1336	5.6	SA 1318	6.1	F 1240	5.6	SA 1824	0.7	M 1310	5.6	TU 1314	6.1
● 1835	1.0	O		1929	0.9	1930	0.6	● 1835	1.0	O		1911	0.8	1932	0.5
5 0047	5.5	20 0027	5.6	5 0143	5.6	20 0132	6.1	5 0048	5.6	20 0025	6.0	5 0118	5.6	20 0130	6.2
0713	0.8	0648	0.6	0807	0.7	0808	0.1	0709	0.7	0702	0.2	0734	0.7	0801	0.3
W 1314	5.7	TH 1252	5.8	SA 1409	5.6	SU 1401	6.2	SA 1312	5.6	SU 1256	6.1	TU 1338	5.7	W 1356	6.0
1913	1.0	1900	0.8	2000	0.9	2013	0.5	1906	0.9	1909	0.6	1943	0.8	2016	0.4
6 0126	5.6	21 0110	5.8	6 0213	5.6	21 0213	6.2	6 0118	5.6	21 0108	6.1	6 0148	5.7	21 0215	6.1
0753	0.7	0738	0.4	0835	0.7	0851	0.1	0738	0.6	0746	0.1	0804	0.7	0840	0.5
TH 1354	5.7	F 1336	6.0	SU 1439	5.6	M 1443	6.1	SU 1341	5.6	M 1338	6.2	W 1407	5.6	TH 1438	5.9
1948	1.0	1945	0.7	2030	0.9	2053	0.5	1936	0.8	1953	0.5	2015	0.8	2058	0.5
7 0203	5.6	22 0152	5.9	7 0242	5.6	22 0254	6.1	7 0146	5.7	22 0150	6.2	7 0219	5.6	22 0301	5.9
0829	0.7	0825	0.3	0901	0.7	0929	0.2	0806	0.6	0827	0.1	0833	0.8	0916	0.7
F 1431	5.6	SA 1420	6.1	M 1508	5.5	TU 1524	6.0	M 1408	5.6	TU 1419	6.1	TH 1437	5.6	F 1521	5.6
2020	1.0	2029	0.7	2058	0.9	2130	0.6	2007	0.8	2034	0.5	2045	0.9	2137	0.7
8 0236	5.5	23 0233	6.0	8 0312	5.6	23 0336	6.0	8 0215	5.7	23 0233	6.2	8 0252	5.5	23 0348	5.7
SA 0900	0.8	0909	0.2	0912	0.8	1005	0.4	0833	0.7	0904	0.3	0900	1.0	0952	1.0
SA 1506	5.5	SU 1503	6.0	TU 1538	5.4	W 1607	5.7	TU 1436	5.6	W 1500	6.0	F 1509	5.5	SA 1604	5.4
2051	1.1	2110	0.7	2126	1.0	2206	0.8	2036	0.8	2112	0.5	2113	1.0	2218	0.9
9 0308	5.5	24 0314	5.9	9 0342	5.4	24 0421	5.8	9 0244	5.6	24 0316	6.0	9 0327	5.4	24 0440	5.4
0927	0.9	0911	0.3	0952	0.9	1039	0.7	0859	0.8	0939	0.5	0926	1.1	1032	1.3
SU 1539	5.4	M 1547	5.9	W 1610	5.2	TH 1652	5.4	W 1505	5.5	TH 1542	5.7	SA 1545	5.3	SU 1654	5.1
2121	1.1	2148	0.8	2155	1.2	€ 2245	1.0	2104	0.9	2149	0.7	2144	1.1	2305	1.1
10 0340	5.4	25 0357	5.8	10 0416	5.3	25 0512	5.4	10 0315	5.5	25 0402	5.7	10 0408	5.3	25 0540	5.0
0953	0.9	1030	0.4	1019	1.1	1120	1.1	0924	0.9	1014	0.9	0959	1.3	1124	1.6
M 1613	5.2	TU 1632	5.7	TH 1645	5.0	F 1746	5.1	TH 1536	5.4	F 1626	5.4	SU 1627	5.1	M 1754	4.8
2153	1.2	2226	0.9	2227	1.3	2337	1.2	2129	1.1	2229	0.9	2227	1.2	€	
11 0415	5.2	26 0443	5.7	11 0455	5.0	26 0617	5.0	11 0348	5.4	26 0454	5.4	11 0459	5.1	26 0015	1.3
1023	1.1	1108	0.7	1053	1.3	1220	1.4	0946	1.1	1054	1.2	1050	1.5	0648	4.8
TU 1649	5.0	W 1722	5.4	F 1729	4.8	SA 1854	4.8	F 1610	5.2	SA 1717	5.0	M 1722	4.9	TU 1237	1.8
2229	1.4	€ 2310	1.1	€ 2312	1.5			2157	1.2	€ 2319	1.2	€ 2330	1.3	1907	4.6
12 0453	5.1	27 0536	5.4	12 0546	4.8	27 0056	1.5	12 0428	5.2	27 0559	5.0	12 0605	4.9	27 0148	1.4
1059	1.2	1153	1.0	1144	1.5	0739	4.8	1015	1.3	1151	1.5	1206	1.6	0804	4.8
W 1731	4.9	TH 1818	5.1	SA 1828	4.6	SU 1348	1.6	SA 1651	5.0	SU 1824	4.7	TU 1835	4.7	W 1401	1.7
€ 2311	1.5					2016	4.6	€ 2238	1.3					2024	4.7
13 0538	4.9	28 0004	1.3	13 0019	1.6	28 0242	1.5	13 0516	4.9	28 0038	1.4	13 0101	1.3	28 0259	1.2
1144	1.4	0640	5.1	0657	4.6	0908	4.8	1104	1.5	0718	4.8	0727	4.9	0914	5.0
TH 1822	4.7	F 1256	1.2	SU 1308	1.7	M 1515	1.6	SU 1746	4.7	M 1317	1.8	W 1343	1.6	TH 1509	1.6
		1926	4.9	1948	4.6	2139	4.8	2343	1.5	1946	4.6	2003	4.8	2131	4.9
14 0006	1.7	29 0121	1.5	14 0204	1.6	29 0227	1.6	14 0623	4.7	29 0223	1.4	14 0234	1.1	29 0357	1.1
0637	4.7	0759	4.9	0827	4.6	1143	4.7	1225	1.7	0844	4.8	0851	5.1	1011	5.2
F 1247	1.6	SA 1417	1.4	M 1453	1.6			M 1904	4.8	TU 1445	1.7	TH 1502	1.4	F 1605	1.4
1928	4.6	2042	4.8	2113	4.7					2109	4.7	2119	5.1	2224	5.1
15 0122	1.8	30 0253	1.4	15 0332	1.4	30 0346	1.2	15 0124	1.5	30 0346	1.2	15 0345	0.8	30 0444	1.0
0753	4.6	0922	4.9	0949	4.9	0956	5.1	0752	4.7	0956	5.1	0959	5.5	1056	5.3
SA 1415	1.6	SU 1536	1.4	TU 1604	1.3	W 1556	1.5	TU 1417	1.6	W 1556	1.5	F 1605	1.1	SA 1652	1.2
2040	4.7	2157	4.9	2223	5.1	2214	5.0	2037	4.7	2214	5.0	2220	5.5	2307	5.3
31 0421	1.3	31 1035	5.1	31 0447	1.0	31 1051	5.3	31 0447	1.0	31 1051	5.3	31 0447	1.0	31 1051	5.3
M 1647	1.3	2301	5.1	TH 1651	1.3	2304	5.3	TH 1651	1.3	2304	5.3	TH 1651	1.3	2304	5.3

ENGLAND — SHEERNESS

LAT 51°27'N LONG 0°45'E

TIME ZONE UT(GMT)

TIMES AND HEIGHTS OF HIGH AND LOW WATERS

YEAR 2011

MAY				JUNE				JULY				AUGUST			
Time	m	Time	m	Time	m	Time	m	Time	m	Time	m	Time	m	Time	m
1 0523 SU 1134 1732 2344	0.9 5.4 1.0 5.4	16 0517 M 1119 1731 2336	0.6 5.8 0.8 5.8	1 0559 W 1211 1820 ●	1.0 5.5 0.9 ●	16 0015 TH 0636 1240 1907	5.7 0.8 5.7 0.6	1 0009 F 0615 1231 ● 1845	5.5 1.0 5.6 0.8	16 0058 SA 0706 1313 1945	5.7 1.0 5.7 0.6	1 0119 M 0727 1334 2005	5.9 0.8 5.9 0.4	16 0157 TU 0754 1403 2029	5.8 1.0 5.8 0.7
2 0558 M 1809	0.9 5.5 0.9	17 0609 TU 1207 1826 Q	0.5 5.9 0.6	2 0028 TH 0637 1248 1901	5.5 0.9 5.6 0.8	17 0106 F 0720 1325 1955	5.8 0.8 5.7 0.6	2 0052 SA 0658 1311 1932	5.6 0.9 5.7 0.7	17 0141 SU 0744 1352 2024	5.8 1.0 5.7 0.6	2 0200 TU 0811 1413 2050	6.0 0.7 6.0 0.3	17 0229 W 1434 2057	5.7 1.0 5.7
3 0018 TU 1239 ● 1844	5.5 0.8 5.6	18 0026 W 0655 1253 1916	6.0 0.5 5.9	3 0107 F 0715 1325 1942	5.6 0.9 5.6 0.7	18 0153 SA 0801 1408 2039	5.8 0.9 5.7 0.6	3 0134 SU 0741 1350 2018	5.7 0.9 5.7 0.5	18 0221 M 0819 1429 2059	5.8 1.0 5.7 0.6	3 0242 W 0853 1432 2132	6.1 0.7 6.0 0.3	18 0259 TH 0854 1503 2122	5.6 1.0 5.7
4 0051 W 0703 1310 1920	5.6 0.8 5.6 0.8	19 0114 TH 0738 1338 2003	6.0 0.6 5.9	4 0146 SA 0753 1402 2024	5.6 0.9 5.6 0.7	19 0237 F 0839 1448 2119	5.8 1.0 5.6 0.7	4 0216 M 0824 1430 2103	5.8 0.7 5.7 0.4	19 0258 TU 0851 1503 2129	5.7 1.0 5.6 0.7	4 0324 TH 0932 1534 2211	6.0 0.8 5.9 0.4	19 0329 F 0924 1531 2147	5.5 1.1 1.1 1.0
5 0125 TH 1342 1956	5.6 0.8 5.6	20 0202 F 0737 1421 2048	6.0 0.7 5.8	5 0226 SU 0833 1440 2107	5.7 0.9 5.6	20 0320 M 0914 1527 2154	5.6 1.1 5.5	5 0258 TU 0906 1510 2147	5.9 0.8 5.7 0.5	20 0332 W 0921 1535 2155	5.5 1.1 5.5 0.8	5 0407 W 1009 1617 2248	5.8 0.9 5.8 0.6	20 0359 SA 0949 1607 2213	5.3 1.3 5.3
6 0159 F 0810 1416 2032	5.6 0.9 5.6	21 0249 SA 0857 1504 2129	5.8 0.9 5.6	6 0308 M 0913 1521 2150	5.7 1.0 5.5	21 0401 TU 0947 1605 2226	5.5 1.2 5.3	6 0342 W 0947 1553 2229	5.8 0.9 5.7 0.5	21 0406 TH 0951 1608 2222	5.4 1.2 5.4 1.0	6 0454 SA 1049 1707 2329	5.6 1.1 5.6 0.9	21 0433 SU 1021 1644 2247	5.2 1.4 5.1
7 0236 SA 0844 1451 2108	5.6 1.0 5.5	22 0336 SU 0933 1546 2209	5.6 1.1 5.9	7 0353 TU 0955 1605 2235	5.6 1.1 5.4	22 0442 W 1022 1645 2300	5.3 1.3 5.2 1.1	7 0428 TH 1028 1638 2311	5.7 1.0 5.6 0.7	22 0441 F 1024 1645 2254	5.2 1.3 5.2 1.1	7 0547 SU 1139 1807	5.3 1.3 5.3	22 0514 M 1103 1732 2334	4.9 1.6 4.9
8 0315 SU 0918 1529 2145	5.5 1.1 5.4	23 0424 M 1011 1631 2250	5.4 1.3 5.2	8 0443 W 1041 1655 2325	5.5 1.2 5.3	23 0525 TH 1103 1730 2341	5.1 1.5 5.0 1.2	8 0518 F 1112 1730 2358	5.5 1.2 5.5 0.8	23 0519 SA 1103 1727 2334	5.0 1.5 5.0 1.3	8 0625 M 1249 1922	1.2 1.4 5.1	23 0608 TU 1205 1837	4.7 1.7 4.6
9 0359 M 0957 1614 2231	5.4 1.2 5.2	24 0514 TU 1054 1722 2340	5.1 1.5 5.0	9 0538 TH 1135 1753 J	5.3 1.3 5.2	24 0613 F 1154 1823	4.9 1.6 4.8	9 0615 SA 1206 1831	5.3 1.3 5.3	24 0606 SU 1153 1821	4.8 1.7 4.7	9 0143 TU 0806 1421 2046	1.4 4.9 5.0	24 0049 W 0723 1342 2004	1.8 4.6 4.6
10 0451 TU 1047 1707 J 2329	5.2 1.4 5.0	25 0610 W 1149 1820	4.9 1.7 4.8	10 0623 F 0641 1238 1859	0.9 5.2 1.3	25 0036 SA 0708 1258 1925	1.4 4.7 1.7	10 0057 SU 0720 1315 1943	1.0 5.2 1.4	25 0030 M 0705 1303 1932	1.5 4.7 1.8	10 0306 W 0925 1551 2206	1.4 5.0 1.3	25 0232 TH 1513 2128	1.7 4.8 4.9
11 0553 W 1153 1814	5.1 1.5 4.9	26 0047 TH 0711 1259 1926	1.3 4.8 1.7	11 0131 F 0750 1349 2011	0.9 5.2 1.3	26 0147 SA 0810 1414 2033	1.4 4.7 1.7	11 0210 M 0830 1435 2058	1.1 5.1 1.3	26 0154 TU 0818 1434 2050	1.6 4.7 1.7	11 0421 TH 1035 1708	1.3 5.2 5.5	26 0344 F 1002 1620 2234	1.5 1.2 1.2
12 0043 TH 1311 1930	1.1 5.1 5.0	27 0158 F 0815 1412 2032	1.3 4.8 4.8	12 0240 SU 0857 1459 2119	0.9 5.3 5.3	27 0256 M 0912 1522 2137	1.4 4.9 1.5	12 0323 TU 0940 1553 2211	1.1 5.2 1.2 5.3	27 0313 W 0930 1546 2201	1.5 4.9 1.4	12 0523 F 1131 1804	1.2 5.5 0.8	27 0443 SA 1059 1719 2327	1.2 5.5 0.9
13 0203 F 0820 1425 2043	1.0 5.2 1.3 5.2	28 0258 SA 0916 1514 2043	1.3 4.9 1.5	13 0347 M 1000 1607 2223	0.9 5.4 1.1	28 0354 TU 1010 1619 2234	1.3 5.1 1.3	13 0432 W 1045 1708 2315	1.1 5.3 1.0 5.5	28 0415 TH 1033 1646 2300	1.3 5.2 1.2 5.2	13 0001 SA 1217 O 1848	5.7 1.1 0.7	28 0534 SU 1147 1812	1.0 5.7 0.6
14 0313 SA 0928 1531 2147	0.8 5.4 1.1 5.4	29 0351 SU 1008 1607 2223	1.2 5.1 1.3	14 0450 TU 1058 1714 2321	0.8 5.5 5.6	29 0445 W 1102 1711 2324	1.2 5.3 1.1 5.3	14 0533 TH 1141 1811	1.1 5.5 0.8	29 0508 F 1125 1740 2350	1.2 5.4 0.9 5.5	14 0045 SU 0648 1256 1926	5.8 1.0 5.7 0.7	29 0013 M 0622 1230 ● 1900	5.9 0.9 5.9 0.4
15 0417 SU 1027 1632 2244	0.7 5.6 1.0 5.7	30 0437 M 1053 1655 2308	1.1 5.3 1.1	15 0547 W 1151 1814 O	0.8 5.6 0.8	30 0532 TH 1148 1759	1.1 5.5 0.9	15 0010 F 0623 1230 O 1901	5.6 1.0 5.6 0.7	30 0556 SA 1211 1831 ●	1.0 5.6 0.7	15 0123 M 1331 1959	5.8 5.7 0.6	30 0057 TU 1311 1945	6.1 0.8 6.3
		31 0520 TU 1133 1739 2349	1.0 5.4 1.0 5.4							31 0035 SU 0642 1254 1919	5.8 0.9 5.8 0.5			31 0139 W 0751 2028	6.2 0.7 0.2

ENGLAND — SHEERNESS

LAT 51°27'N LONG 0°45'E

TIME ZONE UT(GMT)

TIMES AND HEIGHTS OF HIGH AND LOW WATERS

YEAR 2011

SEPTEMBER				OCTOBER				NOVEMBER				DECEMBER			
Time	m	Time	m	Time	m	Time	m	Time	m	Time	m	Time	m	Time	m
1 0220	6.2	16 0225	5.7	1 0237	6.1	16 0223	5.7	1 0345	5.5	16 0309	5.4	1 0414	5.3	16 0338	5.5
TH 0833	0.7	F 0826	1.0	TH 0853	0.7	SU 0830	1.0	1 1004	1.0	1 0924	1.1	1 1036	1.0	1 1003	0.9
TH 1431	6.2	F 1433	5.7	SA 1453	6.2	SU 1438	5.6	TU 1619	5.6	W 1538	5.4	TH 1654	5.3	F 1612	5.5
2109	0.3	2048	0.9	2121	0.6	2045	1.1	2216	1.3	2132	1.3	2236	1.5	2205	1.2
2 0301	6.1	17 0253	5.6	2 0319	5.8	17 0254	5.5	2 0435	5.2	17 0350	5.3	2 0503	5.1	17 0422	5.4
0912	0.7	SA 0854	1.1	0933	0.8	0900	1.1	2 1052	1.2	1 1005	1.1	1 1123	1.2	1 1046	0.9
F 1513	6.1	SA 1503	5.6	SU 1540	5.9	M 1513	5.5	W 1717	5.3	TH 1625	5.3	F 1747	5.1	SA 1702	5.3
2146	0.5	2113	1.0	2157	0.9	2112	1.2	J 2305	1.6	2216	1.4	J 2325	1.6	2251	1.3
3 0343	5.8	18 0323	5.5	3 0404	5.5	18 0328	5.4	3 0533	5.0	18 0438	5.1	3 0558	5.0	18 0513	5.3
SA 0950	0.9	SU 0921	1.2	1 1014	1.0	0930	1.2	1 1157	1.4	1 1055	1.2	1 1221	1.4	1 1135	1.0
SA 1557	5.9	SU 1536	5.4	M 1632	5.6	TU 1551	5.3	TH 1824	5.0	F 1720	5.2	SA 1847	4.9	SU 1759	5.2
2222	0.8	2138	1.2	2238	1.3	2143	1.4	1935	5.0	2312	1.6	2321	1.6	2347	1.4
4 0428	5.6	19 0356	5.3	4 0455	5.2	19 0407	5.2	4 0611	1.8	19 0536	5.0	4 0628	1.8	19 0613	5.2
1 1029	1.0	1 0949	1.3	1 1104	1.2	1 1009	1.3	1 1322	4.8	1 1159	1.3	1 1331	1.4	1 1236	1.1
SU 1647	5.6	M 1613	5.2	TU 1734	5.2	W 1638	5.1	F 1322	4.4	SA 1825	5.1	SU 1331	4.8	M 1905	5.1
J 2302	1.1	2207	1.4	J 2331	1.6	2227	1.6	1935	5.0	1935	5.0	1950	4.8	1950	4.8
5 0519	5.2	20 0434	5.1	5 0600	4.9	20 0456	5.0	5 0133	1.8	20 0023	1.6	5 0142	1.8	20 0055	1.4
1 1118	1.3	1 1027	1.5	1 1218	1.5	1 1104	1.5	5 0757	4.8	5 0647	5.0	5 0808	4.8	5 0724	5.2
M 1749	5.3	TU 1659	5.0	W 1850	5.0	TH 1737	5.0	SA 1436	1.3	SU 1317	1.2	M 1436	1.4	TU 1351	1.1
2357	1.4	2251	1.6	2357	1.8	2333	1.8	2047	5.0	1939	5.1	2053	4.9	2015	5.2
6 0624	5.0	21 0525	4.8	6 0650	1.8	21 0602	4.8	6 0245	1.7	21 0142	1.5	6 0250	1.7	21 0213	1.4
TU 1908	5.0	W 1800	4.8	TH 1358	1.5	F 1852	4.9	5 0906	5.0	5 0803	5.1	TU 1531	1.3	W 1506	1.0
				2013	5.0			SU 1538	1.2	M 1433	1.1	TU 1531	1.3	W 1506	1.0
								2149	5.2	2050	5.3	2150	5.0	2123	5.3
7 0119	1.6	22 0002	1.8	7 0219	1.8	22 0103	1.8	7 0344	1.5	22 0253	1.4	7 0347	1.5	22 0328	1.2
W 0744	4.8	TH 0635	4.7	8 0839	4.9	8 0725	4.8	7 1003	5.2	7 0912	5.4	7 1007	5.1	7 0948	5.4
W 1414	1.5	TH 1256	1.7	F 1521	1.3	SA 1359	1.4	M 1627	1.1	TU 1540	0.9	W 1620	1.2	TH 1614	1.0
2035	5.0	1923	4.7	2129	5.2	2015	5.1	2238	5.4	2153	5.5	2238	5.2	2226	5.4
8 0248	1.6	23 0147	1.8	8 0332	1.6	23 0228	1.6	8 0433	1.3	23 0357	1.2	8 0438	1.3	23 0438	1.0
TH 0908	4.9	0807	4.7	9 0949	5.2	9 0845	5.1	1050	5.4	1012	5.6	1055	5.2	1051	5.6
TH 1545	1.3	F 1438	1.5	SA 1626	1.0	SU 1513	1.1	TU 1707	1.0	W 1641	0.8	TH 1703	1.1	F 1716	0.9
2154	5.2	2052	5.0	2228	5.5	2127	5.4	2318	5.5	2249	5.7	2320	5.4	2323	5.6
9 0405	1.5	24 0309	1.6	9 0431	1.4	24 0334	1.3	9 0515	1.2	24 0457	1.0	9 0522	1.1	24 0545	0.8
1 1018	5.2	0926	5.1	1 1043	5.4	0949	5.4	1 1129	5.5	1 1108	5.8	1 1137	5.4	1 1149	5.7
F 1656	1.0	SA 1549	1.1	SU 1714	0.9	M 1616	0.8	W 1742	1.0	TH 1737	0.7	F 1742	1.1	SA 1811	0.8
2255	5.5	2203	5.4	2315	5.6	2226	5.7	2353	5.6	2340	5.9	2358	5.5	2358	5.5
10 0504	1.3	25 0411	1.3	10 0515	1.2	25 0431	1.1	10 0552	1.0	25 0556	0.8	10 0604	1.0	25 0015	5.7
1 1112	5.5	1 1026	5.5	1 1126	5.6	1 1043	5.7	1 1204	5.6	1 1159	6.0	1 1215	5.5	1 1047	5.7
SA 1764	0.8	SU 1650	0.8	M 1751	0.9	TU 1714	0.6	TH 1814	0.9	F 1828	0.6	SA 1819	1.0	SU 1859	0.8
2343	5.7	2258	5.7	2354	5.7	2317	5.9	O				O			
11 0548	1.2	26 0506	1.0	11 0551	1.1	26 0526	0.9	11 0625	5.8	26 0028	5.9	11 0034	5.8	26 0103	5.8
1 1155	5.6	1 1116	5.8	1 1202	5.6	1 1132	6.0	1 0628	0.9	1 0850	0.7	1 0642	0.9	1 0733	0.6
SU 1825	0.8	M 1746	0.6	TU 1821	0.9	W 1806	0.5	F 1238	5.6	SA 1250	6.1	SU 1253	5.6	M 1331	5.9
		2346	6.0					1845	0.9	1915	0.6	1854	1.0	1942	0.8
12 0023	5.8	27 0556	0.9	12 0027	5.7	27 0004	6.1	12 0056	5.7	27 0115	5.9	12 0109	5.8	27 0147	5.8
0622	1.1	1 1201	6.0	0623	1.0	0617	0.8	12 0703	0.9	12 0741	0.6	12 0721	0.8	12 0820	0.5
M 1232	5.7	TU 1835	0.4	W 1235	5.7	TH 1219	6.1	SA 1311	5.7	SU 1339	6.1	M 1330	5.6	TU 1417	5.9
O 1857	0.7			O 1849	0.8	1853	0.5	1917	0.9	1958	0.7	1930	0.9	2022	0.9
13 0058	5.8	28 0031	6.1	13 0057	5.7	28 0049	6.1	13 0127	5.7	28 0200	5.9	13 0144	5.6	28 0229	5.7
TU 1304	5.8	W 1244	6.2	TH 1305	5.7	F 1305	6.2	SU 1345	5.7	M 1427	6.0	TU 1407	5.7	W 1500	5.8
1926	0.7	1920	0.3	1918	0.8	1937	0.5	1950	1.0	2039	0.9	2008	0.9	2058	1.0
14 0128	5.8	29 0113	6.2	14 0125	5.7	29 0132	6.1	14 0200	5.6	29 0244	5.7	14 0220	5.6	29 0310	5.6
0725	0.9	0728	0.7	0728	0.9	0753	0.6	14 0813	0.9	14 0912	0.7	14 0842	0.8	14 0939	0.7
W 1304	5.8	TH 1326	6.3	F 1335	5.8	SA 1351	6.2	M 1420	5.6	TU 1515	5.8	W 1446	5.7	TH 1542	5.6
1954	0.7	2003	0.3	1947	0.9	2018	0.6	2023	1.0	2117	1.1	2046	1.0	2132	1.1
15 0157	5.7	30 0155	6.2	15 0153	5.7	30 0216	6.0	15 0233	5.6	30 0328	5.6	15 0258	5.5	30 0349	5.5
1 0756	0.9	0912	0.6	0800	0.9	0838	0.6	0848	1.0	0955	0.9	0923	0.8	1 1011	0.9
TH 1404	5.8	F 1409	6.3	SA 1406	5.7	SU 1438	6.1	TU 1457	5.5	W 1604	5.6	TH 1528	5.6	F 1623	5.4
2022	0.8	2043	0.4	2016	0.9	2058	0.8	2056	1.2	2155	1.3	2125	1.1	2205	1.3
				31 0259	5.8							31 0428	5.3		
				0921	0.8							1042	1.0		
				M 1527	5.8							SA 1705	5.2		
				2136	1.1							2241	1.4		



TITCHMARSH
marina

Welcomes visitors to one of the most attractive harbours on the East Coast

Full Marina Facilities
Temporary & Permanent Berthing Available
Winter Storage Ashore or Afloat



www.titchmarshmarina.co.uk

Harbour Office T: 01255 672 185 F: 01255 851 901

VHF Channel 80 E: info@titchmarshmarina.co.uk

Titchmarsh Marina (Walton-on-the-Naze) Ltd. Coles Lane, Walton-on-the-Naze, Essex CO14 8SL



Elite Sailing
training and adventure



Your RYA Training Centre & Sailing School on the Medway

RYA Practical and Theory Courses – Sail and Motor Cruising
High Quality Training, Individual Attention, Smart, Spacious Yachts

Competent Crew
Helmsman
Day Skipper
Coastal Skipper
Yachtmaster
ICC
Own Boat Tuition

Day Skipper Theory
Yachtmaster Theory
Ocean YM Theory
VHF/SRC
Diesel Engine
First Aid at Sea
Marine Radar Course

Adventure Sailing Holidays and Yacht Charter

Plus a sailing shop with charts, books, a select range of clothing and great coffee!
Visit us at Chatham Maritime Marina. Tel 01634 890512 www.elitesailing.co.uk

Medway Cruising Club

A Brief History



In December 1895 Sgt. Major Burton RE., together with like minded men from Chatham Dockyard and a few local traders met at a café in Old Brompton to discuss the idea of forming a club.

After approval, a second meeting at the Admiralty Tavern, Gillingham in January, 1896 elected Burton as Commodore, set a monthly subscription and chose a burgee design. A disused waiting room on the west arm at Gillingham Pier was rented from the local council at £2 per annum as a store. The Club remained here until 1924 when it moved the store to a new site on the east arm, erected a clubhouse and leased an area of land from Novadels Paint Comapny.

Access to the water was via Admiralty Pier and the Club employed a boatman to ferry members to and from their craft. Early activities were cruises in company and handicap racing. The cruises were led by the Commodore or Vice followed by the members who received points for good station keeping and smart seamanship. The first took place on 7th April 1896, a smoking concert was held at the Admiralty Tavern afterwards. The Commodore also gave lectures on seamanship and navigation and a closing dinner was usually held in November. The annual subscriptions were set at 12/6d.

All the clubs on the river ran their own regattas. In the 1950s they combined to run Medway Week which was a huge success. Over the years numbers fell and the Club now runs its own Gala Weekend which is open to outside entries, and uses local handicaps.

In 1960 the land at the Pier was lost. The Club moved to the Anchorage, a site rented from the local council. A slipway, a workshop and a new Clubhouse were built where built at Commodores Hard, the Strand. The Clubhouse was replaced by a fine new brick one after a fire destroyed the original in 2003. It has good facilities with a race start line and starting box.

The club is run by flag officers and a general committee elected annually. There is an active social committee who organise events for the members benefit, we also provide a bar which is open at all events and Sunday lunch times.

The Anchorage site provides winter berthing and the means to maintain, build or complete GRP hulls. Members are encouraged to carry out maintenance work on the clubs behalf thereby keeping annual subscriptions down. If you would like to find out more about MCC or are intersted in joining please contact:
P Jessup

TENTOP TIPS

Selling a Boat

It is vitally important that in today's market that your yacht or powerboat is well presented and has all of the appropriate documentation and is easily accessible if you wish to achieve a quick sale. The following is a list of the top ten things to consider when selling your boat.

1 Leave it tidy

A neat, clean and tidy boat will always sell quicker and for more money than a tatty sistership. The impression that a purchaser gets in the first five minutes on board usually decides if he or she is going to make an offer. Therefore, make sure that you either remove your personal belongings or place them in cupboards. There is nothing like a full forepeak or quarter berth to quench any impression of space below.

2 Make it look clean

Make sure that as well as cleaning the exterior of the boat that the interior is clean particularly the fridge and cooker. There is nothing worse than a prospective buyer finding the remains of last weeks super in the fridge or thick grease in the oven

3 Make it smell good

Make sure that when cleaning the interior of the vessel that you also clean the bilges and the engine bay. There is nothing more off

putting, particularly for someone buying a boat for the first time, than to open the hatch of your vessel and be knocked back by the smell of stale water in the bilges and oil and diesel in the engine bay.

4 Maximise your advertising

There are many different locations to advertise your boat, from the local post office window, local newspapers, yacht clubs, yachting magazines, numerous paid and free web sites or through a professional broker. The cost of advertising varies depending upon the size of your advert and the number of words. Advertising through a professional broker will mean that your boat will normally be seen in the yachting press and through their membership of different agencies on numerous websites both in the UK and abroad. Remember advertising your boat for sale with a broker normally costs nothing until it is sold when you pay them a commission on the final selling price.

5 Get the sale price right

We all think that our pride and joy is worth more than what it actually is. The key to selling your boat is to make sure that it is priced correctly. An over priced boat will sit on the market for a long period of time and will only cost you money to store. If you are serious about selling make sure that the price is right. A good broker will be able to give you advice on not only what price to advertise your boat at but will be able to tell you what has sold and at what price recently.

6 Check you have proof of ownership

Any buyer will want to make sure that you are the legal owner of the vessel and have the authority to sell the boat. Therefore, before you advertise your boat for sale make sure that you have all of the appropriate title documents available to prove ownership. If they are not available it can not only hold up completion of the sale but in some cases can cause the sale not to complete. A good broker will always provide advice and guidance on what documentation is required.

7 Do you know the VAT status of your boat

It is important that you know and have proof of the VAT status of your boat. We are seeing an increasing number of buyers coming from Europe to buy boats based in the UK. When they return to their home country they will be required to prove the VAT status of the vessel if it was built post 1985. The best way to show this is to have the original VAT paid invoice. If you are not sure always speak to a professional broker who will be able to give you advice on the documentation required. Remember if you cannot confirm the VAT status of your vessel it can not only hold up completion of the sale but in some cases can cause the sale not to complete.

8 Engine

Make sure that your engine has recently been serviced and is visually clean. Keep a copy of the service history, record or copies of the relevant invoices onboard the boat for prospective buyers to see. Knowing that the boat has been well maintained and in particular the engine serviced in line with manufacturers recommendations will give the prospective buyer confidence to make an offer.

9 Hull

If you have taken your boat out of the water to sell and will be storing it ashore we would recommend that you invest the time and a small amount of money cleaning the topsides and antifouling the hull. There is nothing worse than seeing a boat with weed and barnacles hanging from it.

If the boat is presented in a clean condition and ready to sail away for the start of the season this will make your boat stand out against others and hopefully encourage the prospective buyer to make an increased offer knowing that they can get on the water sooner.

10 Offers

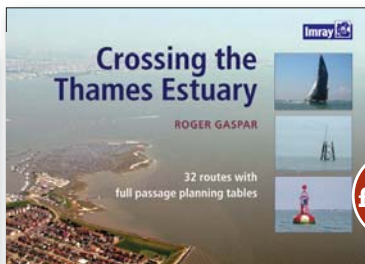
Remember that prospective buyers will always expect to make an offer less than the asking price. Some buyers will start off with a very low offer in the hope to grab a bargain whilst others will make a realistic offer. Therefore, it is worth thinking before you place your boat on the market what monies you really want to achieve from the sale of the vessel. A professional broker will always help in the negotiations and give advice on what he feels the buyer can afford. In the current market it is worth giving every offer serious consideration.



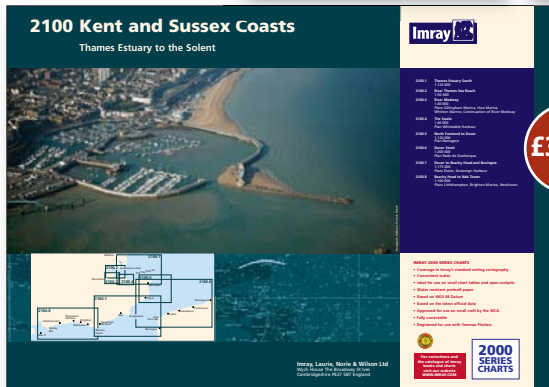
**Feature by Peter Norris
of Clarke & Carter**



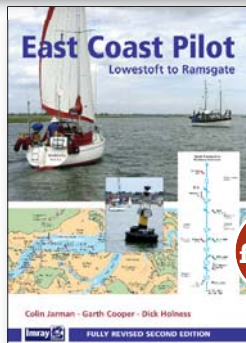
£9.95



£17.95



£37.50



£19.95

www.imray.com



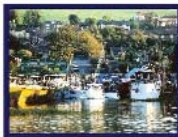
Beacon Boatyard

Boatbuilders & Repairers

Specialists in boat joinery and restoration of classic vessels. We also offer full boatyard facilities, enabling us to undertake all types of boat maintenance and repairs on GRP, steel and wooden boats.

- * Moorings
- * Craneage
- * Drydock
- * Hardstanding & storage
- * Boat sales & Brokerage
- * Marine Engineering
- * Osmosis Treatment
- * Fabrication
- * Varnishing & Painting
- * Antifouling
- * Water/heating/sanitation systems
- * All general shipwright services

Yacht Surveys - Pre Purchase, Damage, Insurance Surveys for Wood, GRP and Steel Boats



Tel: 01634 841320

Email: info@beaconboatyard.co.uk

Manor Lane, Borstal, Rochester, Kent, ME1 3JN

www.beaconboatyard.co.uk

mya 2011

Club Listings

CRAFT ABBREVIATIONS

C - Canoes D - Dinghies M - Multihulls
MC - Motor Cruisers PB - Power Boats
SB - Sailboards SKB - Skiboats SC - Sail Cruisers

ARETHUSA WATERSPORTS CENTRE

www.arethusa.org.uk

KEY: D, PB

In Basin 2 at Chatham Maritime, Arethusa Watersports Centre offers RYA courses and come-and-try-it sessions for both children and adults. BCU canoe and kayak courses also available. Arethusa is fundraising to erect a high quality Watersports Pavilion adjacent to the water, which will replace an old portacabin down on the pontoon. This will provide hot showers and other facilities which will enable the centre to operate all year round. Arethusa works with 7,000 children each year and is part of the children's charity Shaftesbury Young People. Arethusa is grateful to SEEDA and Chatham Maritime Trust for their support with this project. Considerable effort is now required to raise the money needed to enable the Watersports Pavilion project to proceed. To make a donation to assist Arethusa with this important project, please contact Lesley Wright at Arethusa.

Arethusa Watersports Centre

Basin 2, Chatham Maritime ME4 4UD

T: 01634 719933 F: 01634 295905

Head of Centre: Lesley Wright
lwright@shaftesbury.org.uk

Rep to MYA: Mike Booth
mbooth@shaftesbury.org.uk

BEACON BOATYARD

www.beaconboatyard.co.uk

Beacon Boatyard is situated in Borstal, Rochester - upriver from Rochester Bridge.

Beacon boatyard boat builders and repairs, offer full yard facilities and services including: moorings, hand-standing, craneage/lift out facilities dry-docks and yacht surveys. A traditional boatyard being specialists in classic boat restoration, also offering full maintenance and repair and general shipwright services, for GRP, Wood and Steel, motor and sailing vessel. The boatyard is covered by CCTV and has toilet and shower facilities, power and water.

Beacon Boatyard is also home to Skipper's Line marine coatings UK, the Italian yacht paint brand, supplying all types of coatings from varnish to antifouling to the trade and boat owners.

Beacon Boatyard

Manor Lane, Borstal, Rochester,
Kent ME1 3JN

T: 01634 841320 F: 01634 815533

Proprietor: Morris Tolhurst
info@beaconboatyard.co.uk

CHATHAM MARITIME MARINA

www.mdlmarinas.co.uk

KEY: SC, PB

Chatham Maritime Marina, situated half a mile north of Chatham's Historic Dockyard, is a new and ever improving marina. The team are willing to help resident and visiting boat owners at all times. The facilities at Chatham include pontoon berthing, a state of the art ablution block, fuelling berth with hardstanding and lift out facilities.

Chatham Maritime Marina

Marina Developments Ltd, The Lock Building,
Leviathan Way, Chatham, Kent ME4 4LP

T: 01634 899200 F: 01634 899201

Marina Manager: Charlotte Walker
chatham@mdlmarinas.co.uk

CLARKE & CARTER INTERYACHT LTD

www.interyacht.co.uk

Clarke and Carter Interyacht are the largest Yacht Brokers on the East Coast, specialising in both power and sail. We are also East Coast Jeanneau dealers and can offer demonstrations across the range, as well as a spare parts service. In addition to yacht sales, the company offers part exchange, free valuations and introductions to insurance/financial advice. The company has offices at Suffolk Yacht Harbour on the River Orwell, Burnham Yacht Harbour on the River Crouch, Neptune Marina in the centre of Ipswich and Gillingham Marina on the River Medway. We have been established since 1979 and have earned a reputation as professional yet dynamic yacht and motorboat brokers. We always have a large number of boats for sale covering a wide spectrum of costs and specifications, and will be pleased to discuss your specific requirements.

Clarke and Carter Interyacht

Gillingham Marina, Gillingham, Kent, ME7 1UB
T: 01634 571605

Manager: Peter Norris

peter@clarkeandcarter.co.uk

CONYER CRUISING CLUB

www.conyercc.org.uk

KEY: SC, MC, M, Dutch Barges, 62

This family friendly club is situated at the head of Conyer Creek, an area of beauty and tranquillity. It offers its members a full and varied programme for both cruising sailors that race and racing sailors who cruise supplemented by a host of social events throughout the year. Information on how best to approach Conyer by sea and aerial photos of the area at low tide showing the creek's configuration may be found on the web site. The club is an RYA accredited test facility for the International Certificate of Competency - Sail, Motor and CEVNI.

Conyer Cruising Club

c/o Swale Marina, Conyer, Teynham,
Sittingbourne, Kent ME9 9HN

T: 01795 521562

info@conyercc.org.uk

Commodore: Stuart Bradley

Vice Commodore: Nigel Armitage

Rear Commodore Social: Julia Armitage

Honorary Secretary: Annie O'Brien

Treasurer: Trudy Ward

ELITE SAILING

www.elitesailing.co.uk

Elite Sailing is an RYA Training Centre and Sea School. The centre is based at Chatham Marina on the Medway and offers all RYA practical sailing courses and motor cruising courses including Competent Crew, Helmsman, Day Skipper, Coastal Skipper, and Yachtmaster Preparation. The school aims at the highest quality of instruction in a relaxed and enjoyable atmosphere. The sailing yachts, one Bavaria 46 and 2 Jeanneau 35s, are modern, fast, and comfortable with heated accommodation and superb specifications. Motor cruising training is aboard a luxurious Beneteau Trawler 42. Apart from RYA courses there is a spectacular programme of adventure sailing holidays including trips all around Britain and North West Europe sailing aboard a fast, spacious 46 foot yacht. For aspiring professionals or people who want a direct, effective route to Yachtmaster there is a Fast Track course which combines the finest training with an adventurous sailing experience of a lifetime. Elite Sailing also offers sailing weekends for beginners, race training weekends, and corporate days. Tuition is also available on customers' own boats and this can include anything from a day's boat handling training or ICC check-out to a full RYA course. The school provides a full programme of supporting shore-based courses including Day Skipper and Yachtmaster navigation theory, Ocean Yachtmaster theory, VHF/SRC radio, diesel engine maintenance, first aid at sea and radar courses.

These are all run in a comfortable classroom aboard our classic Dutch sailing barge at Chatham marina. The school can also run these courses for clubs, companies and

groups. Visit the website for more details. Finally, Elite Sailing's offices at Chatham Marina include a sailing shop selling charts, books and a select range of sailing clothing. The office is also an agent for yacht charter and yacht maintenance including Selden mast and rigging.

Elite Sailing

Chatham Maritime Marina, Leviathan Way,
Chatham Kent ME4 4LP

T: 01634 890512 M: 07802 670105

Principal: Dave Allan
dave@elitesailing.co.uk

GILLINGHAM MARINA

www.gillingham-marina.co.uk

KEY: SC, PB, MC, M

Gillingham Marina is a five gold anchor marina with excellent road access. Our locked basin pontoon berths have +/- 4 hours HW access, and there are economical tidal berths with up to +/- 2 hour HW access - all berths are fully serviced. We have 24 hour security, first class brokerage, club bar and workshop facilities offering lifting for craft up to 65 tonnes, a complete repair and maintenance service including re-sprays, osmosis treatment and prevention, largest chandlery in the South East dealing in Suzuki outboards, sailing clothing, electronics and all the major names in the chandlery.

Gillingham Marina F Parham Ltd

173 Pier Road, Gillingham, Kent ME7 1UB
T: 01634 280022

Rep to MYA: Clinton Lyon
berthing@gillingham-marina.co.uk

HOLLOWSHORE CRUISING CLUB

www.hollowshorecc.co.uk

KEY: SC, MC

Hollowshore Cruising Club has moved to a new location at Youngboats, at Oare. We are an active club with a programme of cruising and social events. Members frequently cruise in company and can regularly be found in the Thames Estuary and East Coast ports as well as those in France and Holland. Applications for membership are welcome. The club bar is open on Sunday lunchtimes, between 12 noon and 3pm and prospective members are very welcome to come along and find out more about club activities.

Hollowshore Cruising Club

The Boatyard, Oare Road,
Faversham ME13 7TX

Commodore: Andy Jackson
commodore@hollowshorecc.co.uk

Vice Commodore: Mike Torode
vicecommodore@hollowshorecc.co.uk

Rear Commodore: John Webb
rearcommodore@hollowshorecc.co.uk

Honorary Secretary: Dick Holness
T: 01227 366831
secretary@hollowshorecc.co.uk

HOO MARINA

www.hoomarina.com

KEY: M, MC, PB, SC

Ideally situated on the Medway for river, coastal and estuary cruising, Hoo Marina is an excellent choice. We have fully serviced pontoon berths in sheltered basins and there are extensive services like full night security, workshop facilities with a 20T lift out capacity and extensive hardstanding with cradle hire, power and water. Also on site is an attractive café, independent yacht broker and a well known yacht club. Visitors are always welcome.

Hoo Marina

JC Marine Ltd, Vicarage Lane
Hoo, Rochester, Kent ME3 9LE
T: 01634 250311 F: 01634 251761

Proprietors: Peter and Olenka Cawdrey
Robert and Fleur Jones
info@hoomarina.com

HOO NESS YACHT CLUB

www.hooness.org.uk

KEY: M, D, SC, MC, 320

Hoo Ness Yacht Club is a family orientated yacht club on the Medway adjacent to Hoo Marina. The club owns its clubhouse and the surrounding land. It provides docks, scrubbing docks, slipways and yacht storage compounds. Trot and swinging moorings are let to members. To minimise membership fees, self help is encouraged.

Hoo Ness Yacht Club

Vicarage Lane, Hoo, Rochester,
Kent ME3 9LB
Telephone: 01634 250052

Skilltrack marine and rescue training



Skilltrack Ltd is a RYA recognised training organisation based in Rochester Kent. Skilltrack offers a personalised service to both commercial and marine leisure enthusiasts.

We offer the following RYA Courses: VHF/ DSC Short Range Radio, Basic Navigation and Safety, Sea Survival, Diesel Engine Maintenance, CEVENI, Day Skipper Theory and Coastal Skipper/Yacht Master Theory. Please check out our website or give us a call for further details.

Visit www.skilltrack.co.uk or call 01634 407056

The Medway Cruising Club



The Club was founded in 1895 to enable practical people to enjoy boating activities, the primary objective is to provide affordable access to facilities that encourages active participation in sailing and motorboat cruising. We cannot emphasise enough that we encourage "an active membership", this entails participating in club events, maintenance and running of the club. This helps to promote enjoyment and friendship through working together and keeps cost to a minimum. We have storage and repair facilities including a three berth slip, dry dock, covered boat shed, and workshop, we also have a new clubhouse, and dinghy park at Commodore Hard. We arrange cruises and racing plays an important part in club activities with a full programme for cruisers and traditional craft. A full and well supported social programme of events and visits are held throughout the year.

APPROX ANNUAL FEE'S FOR A:

20' Boat £405	30' Boat £480
25' Boat £435	35' Boat £510

THESE PRICES INCLUDE:

- Membership • Winter berthing • Haulage
- MPA mooring allocation • MPA conservancy disc
- Tender storage • Unlimited slip use
- Full use of the club facilities

Located east of Gillingham Marina on the south bank of the river. At both ends of the Strand Leisure Park

MEMBERSHIP IS CURRENTLY AVAILABLE

FOR MORE DETAILS:

Please see our listing in this publication or visit our web site

www.medwaycruisingclub.org.uk

or email us on

info@medwaycruisingclub.org.uk

Commodore: Peter Gaskin

T: 020 8304 1238

commodore@hoooness.org.uk

Rear Commodore: Martin Richards

T: 020 8669 4003

rearcommodore@hoooness.org.uk

Honorary Secretary: Sue Worthington

T: 07736 083938

secretary@hoooness.org.uk

Membership Secretary: Stephen Bush

T: 07880 548804

memberships@hoooness.org.uk

Moorings Master: Tony Cottis

T: 07800 587 849

tcottis@aol.com

Training Principal: Barry Gardiner

T: 07802 737986

moorings@hoooness.org.uk

HUNDRED OF HOO SAILING CLUB

www.hundredofhoosc.org.uk

KEY: SC, PB, 60

The club is situated in Hoo Creek with a mainly local membership. We are very much a do-it-yourself club and only rarely bring in outside help to assist with projects which enable us to be one of the cheapest clubs on the Medway. Most of our moorings dry out but the mud is soft enough for several deep keelers to be accommodated. We have two tractors for launching and recovery of boats which are kept on members own trailers.

Hundred of Hoo Sailing Club

Vicarage Lane, Hoo, Rochester,
Kent ME3 9LB

T: 01634 250102

info@hundredofhoosc.org.uk

Commodore: RA Rush

T: 01634 251791

Honorary Secretary: A Kingswood

T: 01634 718779

Honorary Treasurer: Hugh Hawkins

T: 01634 843307

ISLE OF SHEPPEY SAILING CLUB

www.iossc.org.uk

KEY: D, M, 100

IOSSC is a friendly, family-orientated dinghy and catamaran sailing club situated on the island's north coast. There is a large, modern clubhouse with all the usual amenities. The sailing waters are some of the best in the UK, with direct access to sheltered sea, river and estuary sailing at all states of the tide plus a Blue Flag beach.

An active racing programme is run from April to November, with the annual Round the Island Race event the highlight of the club's sailing calendar, which is also the longest dinghy race in Europe!

The club's superb base is equally good for racing or cruising, and as an RYA Training Centre, training is available to members in both dinghies and powerboats.

IOSSC is currently experiencing a period of rapid growth and development, which is set to accelerate further now that the island's second road crossing is now open.

A free and popular 'WeatherCam' service, showing current weather conditions is available from the club's website.

Isle of Sheppey Sailing Club

Marine Parade, Sheerness, Kent ME12 2BE

T: 01795 663052

info@iossc.org.uk

Commodore: James Bell

T: 01795 664189

Vice Commodore: Ken Brown

T: 01795 521971

Rear-Commodore Sailing: Lee Marriott**Honorary Secretary:** Jennie Hubble**Honorary Membership Sec:** Chas Bedford**KENTISH SAIL ASSOCIATION**

The Kentish Sail Association was established in 1973 to promote and run an annual Swale smack and sailing barge match. Since then it has organised thirty eight regattas that take place each year in August in the East Swale. These days it attracts some seventy-plus traditional craft of all sizes as well as a large armada of spectators; the races are a magnificent sight. In addition, the Association

aims to promote the skills needed to handle and preserve these craft, and assists young people to experience days afloat. A newsletter, *On the Mud*, is published twice a year and a number of social events are organised for members. The Association welcomes new members (annual fee £15) who are interested in the traditional boat scene, whether or not they own their own craft, and it can help to introduce them to a network of like-minded individuals and organisations involved in this sphere of maritime activity. This year's match will be held on 6 August.

Chairman: Nick Relf

T: 07895 090147

Match Secretary: Lena Reekie

T: 07968 058398

Membership Secretary: Lynn East

T: 07939 271683

KINGSFERRY BOAT CLUB

KEY: SC, MC, 40

We are a mixed sailing and cruising club with approx 50 half tide and some deep water moorings on the Swale to the southeast of Kingsferry bridge, providing sheltered water and easy access to the Medway and Thames estuaries. Costs are kept to a minimum and members lay and maintain their own moorings. Our facilities include dinghy and car parking, fresh water, electricity and boat slipway/cradle. We arrange occasional cruises, fishing competitions and social events. We are currently installing access pontoons and are actively seeking new members.

Commodore: Kevin Witt

T: 01795 427980

Honorary Secretary and Rep to MYA:

John Dewey

T: 01795 472316

john.dewey@btopenworld.com

LONG REACH SKI CLUB

KEY: PB, SKB, 100

The Long Reach Ski Club is a members only club for families to enjoy water sports, particularly water skiing. The club's facilities consist of toilets, showers and a wash down area for boats. Unfortunately, we do not possess a clubhouse.

Honorary Secretary and Rep to MYA:

Graham Rosser

T: 01795 511116

longreachskiclub@aol.com

LOWER HALSTOW YACHT CLUB

www.lhyc.org.uk

KEY: D, SC, MC, M, 118

Sited at the head of the peaceful Halstow Creek, (accessible HW +/- 1.5 hours) adjacent beautiful Saxon church, a few minutes along the sea wall. The club welcomes visitors to use the club to get ashore and has moorings located nearby, specifically for their use. The club is predominantly a sailing cruising club catering for craft up to 35' length, but it also has a few very keen and active dinghy sailors. During the season and extremely popular series of "Top of the Tide" races is held. Organised event also cater for the cruising yachtsman, as well as the not-too-competitive cruiser turned racer person.

Commodore: Pat Buckle

T: 01732 321376

Mooring Masters:

Graham Leighton T: 01634 376295

Ray Cracknell T: 01634 373785

Honorary Secretary: Graham Osborne

T: 01634 324517

grahamosborne@blueyonder.co.uk

MARINERS FARM BOATYARD

www.marinersboatyard.co.uk

A family run, traditional boat yard in a rural setting on a quiet yet easily accessible backwater of the Medway Estuary. We offer tidal moorings and secure storage ashore. Our highly competitive rates, experienced yard staff and friendly atmosphere has made us particularly popular for winter storage. Moorings are tidal mud berths with access two

hours either side of high water. Access is by dinghy via the yard's private slipway. Cranage and hoisting is available along with all normal boatyard facilities, including water and mains power. Ample free parking near to your boat, and storage for your tender, trailer or cradle. Mariners Farm has an excellent record for security: access is monitored by CCTV; yard is locked and fully alarmed at night.

Mariners Farm (Marine) Ltd

391 Lower Rainham Road, Rainham
Gillingham, Kent ME87TL
T: 01634 233179

marinersfarm@btconnect.com

Rep to MYC: Elizabeth Lyon

MARITIME OPERATIONS AND LOGISTICS CENTRE

www.nwkclege.ac.uk/smol

The Maritime Operations and Logistics Centre at Gravesend evolved from the merchant navy pre-sea college when it was absorbed by North West Kent College.

The centre is approved by the Maritime and Coastguard Agency and runs predominately short courses including those covered by STCW 95 regulations. Training can be given either in a variety of subjects such as seamanship, navigation, marine engineering, radio, radar and electronics or as required for a particular qualification including Boatmaster, Certificates of Competency or MCA Yacht Certification. STCW 95 safety courses encompass training in first aid, fire fighting, sea survival and personal safety.

In addition the college is an RYA approved centre and as well as running the shore based courses both as an evening class and as intensive training we run the full range of RYA short courses usually at weekends. We have run a number of prototype fire-fighting courses specifically aimed at fire prevention and fire fighting on small vessels.

The college lecturers are predominately time served ships officers and as such have considerable marine experience and expertise which can be utilised either by the college in the design of courses or by the students to develop their own seafaring skills.

Training courses take place at the Gravesend Campus, Dering Way, Gravesend and at the Thameside Campus, Denton, Gravesend. In addition customised courses can be run "off site" at a suitable location such as commercial premises or a yacht club.

Maritime Operations and Logistics Centre

Dering Way, Gravesend, Kent DA12 2JJ

T: 01474 534960 (Thameside Campus)

T: 01322 629600 (Admin Office)

smol@nwkclege.ac.uk

MARITIME VOLUNTEER SERVICE - MEDWAY UNIT

A charity dedicated to involving interested people with the local maritime resource of our river and estuary. Started from the old Royal Naval Reserve using some of its members and much of its expertise and has been up and running from 1984.

The local unit boasts its latest edition which is the historic ex sailing pinnacle COLLIE (circa 1890), converted into a tug and then fire boat working for HMS Hermes and HMS Defiance in Devonport. Today she is based at Cuxton Marina and is available for training in navigation, pilotage and boat handling whilst also being used for filming, photography, observation and research.

Anyone wishing to get out onto our tidal waters to experience what it offers or would like more info about a two week adventure up to Scotland, please contact me.

Contact: Paul Woodhead

14 Kerry Downs, Orpington, Kent BR5 4DT

T: 01689 836740

M: 07896 109609

paul.woodhead@btinternet.com

Rep to MYA: Paul Woodhead

MEDWAY BRIDGE MARINA

www.medwaybridgemarina.co.uk

KEY: SC, PB, MC

Situated on the Medway, southwest of the city of Rochester, the marina offers ample pontoon moorings with easy access to all its facilities. Fuel, shipwright, restaurant/bar, chandlers and brokerage. All main engine manufacturers are represented: in addition to the agency for Seaswirl power and fishing boats and Delphia yachts.

GUARDIAN MARINE TRAINING SERVICES

- Powerboat Level 1 and 2, Intermediate and Advanced
- International Certificate of Competence
- Instructor Training
- VHF Radio GMDSS SRC
- Yachtmaster Theory
- Dayskipper Theory
- Own Boat Tuition
- PWC Course
- First Aid at Sea



Call 01634 710947 or visit www.boattraining.co.uk



Pillory Gate Wharf Strand Street Sandwich Kent CT13 9EU

T. 01304 613925 F. 01304 617800

E. info@highwaymarinegroup.co.uk www.highwaymarinegroup.co.uk

New Boat and Engine Sales, Yacht Brokerage, Zodiac RIBs & Inflatables, Finance, Pontoon Moorings.

Established for over 30 years, we offer yacht brokerage, boatyard services (including undercover workspace for boats up to 42'), pontoon moorings, outboard sales and much more!

- **PROFESSIONAL AND FRIENDLY YACHT BROKERAGE SERVICE**
- **FULLY QUALIFIED MEMBERS OF THE BRBA**
- **FREE HARDSTANDING SUBJECT TO VALUATION WHILE YOUR BOAT SELLS!**



Medway Bridge Marina

Manor Lane, Rochester, Kent ME1 3HS

T: 01634 843576

Director: Giles Billingsley

info@medwaybridgemarina.co.uk

MEDWAY CRUISING CLUB

www.medwaycruisingclub.org.uk

KEY: D, SC, MC, 163

The Medway Cruising Club is one of the oldest cruising clubs in the UK and also one of the oldest in the world being originally established in 1895 to enable practical people to enjoy boating activities. The Club is located in two areas on the South bank of the River Medway at Gillingham. The dinghy park and clubhouse at "The Strand" leisure park and we have winter storage area and repair facilities including a 3 berth slip, dry dock, covered boat shed, and the workshops, at the "Anchorage" boat yard in nearby Waterside Lane. The Club is a non-profit making organization and is administered by a committee, elected from the membership.

The Medway Cruising Club's primary objective is to provide affordable access to facilities that encourage active participation in sailing and motorboat cruising. Members own a wide variety of craft including sailing dinghies, cruising yachts, and motor cruisers. We also have a strong section whose interests lie in building and restoring traditional craft. A variety of gaffers, smacks and other wooden craft are owned and a Thames Barge is currently being rebuilt in the dry dock.

A full and well supported social programme of events and visits is held throughout the year.

Medway Cruising Club

The Strand, Gillingham, Kent ME7 2SE

T: 01634 856489

info@medwaycruisingclub.org.uk

Commodore: Roy Davey

T: 01634 329313

M: 07890 852560

roydavey@blueyonder.co.uk

Honorary Secretary: Christine Diaper

T: 01634 260371

Rep to MYA: Trevor Peen

T: 01634 317968

M: 07760 165691

trevorpeen@blueyonder.co.uk

MEDWAY SAILABILITY

www.medwaysailability.ik.com

KEY: D

Medway (previously Arethusa) Sailability aims to promote opportunities for people with disabilities and those who wish to enable those with disabilities, participate in the sport of recreational sailing. Currently the group has a new Hawk 20 sailboat named "Able Spirit". She is a very stable yet responsive and exciting self righting vessel fitted with modifications and capable of carrying a crew of six. If you are interested in sailing with Medway Sailability please call to arrange a taster session after which you will become a member.

Contact: Carol-Anne Pocock

T: 07778 300824

starlight@rya-online.net

MEDWAY TOWNS ROWING CLUB

www.medwaytownsrowingclub.co.uk

KEY: Sliding Seat, 67

Rowing clubs have existed on the river since the early 1800's and the present club results from an amalgamation of the Medway RC with the Chatham and Gillingham RC in 1958. The club, which is affiliated to British Rowing (formerly the Amateur Rowing Association), welcomes new members and provides all the equipment and coaching free of additional charge. A full training programme, adapted to the needs of the individual/crew, is pursued throughout the year, both on and off the water. For further details please contact us through our website or visit the clubhouse at the Shorts Way end of Rochester Esplanade. Members are present on most mornings.

Medway Towns Rowing Club Club

The Cyril Baker Boathouse, The Esplanade

Rochester, Kent ME1 1QL

M: 07972 406 518

medwaytownsrowingclub@yahoo.co.uk

Captain: Tim Powell

Rep to MYA: Liz McVeigh

MEDWAY WATERSPORTS CENTRE

www.medwaywatersportscentre.org

KEY: C, D, SB, 20

Situated in The Strand Leisure Park at Gillingham, the centre caters for young people and adults in groups or individually. Courses are provided in RYA dinghy sailing from Sailing Stage 1 to preparation for Dinghy Instructor, and in power boating at Level 1, 2 and Safety Boat. Please telephone for this year's programme.

Medway Watersports Centre

Approach Road, The Strand, Gillingham, Kent ME71TT

Principle and Rep to MYA: Trevor Peen

T: 01634 338754

M: 07760 165691

trevor.peen@medway.gov.uk

MEDWAY YACHT CLUB

www.medwayyachtclub.com

KEY: D, SC, MC, 720

The Medway Yacht Club's clubhouse, with its outstanding views across the river, is the focal point for Club Members' year round social and sailing activities with excellent bar and restaurant facilities. Adopted racing classes are Keelboats: Cruisers, Dragons, Sonatas, Squibs, Dinghies: Wayfarers, and other dinghies race under the dinghy handicap system. A fleet of Optimists and Toppers have been purchased providing perfect facilities for children to learn sailing at an early age. Racing for these is conducted at the weekend and in addition we hold a number of open events throughout the season. Junior and Cadet training, combined with regular racing is a major feature of the programme. In addition we host an annual regatta for keelboats and a number of open events including east coast championships, long distance racing and a Topper South East Area Championship.

The club offers a wide range of facilities - over 200 moorings, Wise 14 ton Travel Hoist, scrubbing trolley that runs on rails which can

be used in conjunction with a static hoist to lift Dragons, Sonatas and cruisers up to 3 tons onto and off road trailers. We can provide winter storage for cruisers plus summer and winter parking for dinghies. The Club is an accredited RYA Training Centre and practical training courses are held regularly for dinghy sailing, motor boat (PB2), safety boat, first aid and GMDSS certificates and there are theoretical courses for other RYA certification, we also hold RYA Volvo status. Practical courses use the Club's launches and Wayfarers. We operate a trot boat service at weekends and there is a floating pontoon. For more information about the Club and its activities, see the website or telephone the office.

Medway Yacht Club

Lower Upnor, Rochester, Kent ME2 4XB

T: 01634 718399

Medwayyc@aol.com

Commodore: Roger Bishop

Vice Commodore: Benita Woolley

Rear Commodore: Edwin Hannant

Sailing Secretary: Claire Sheppard

Mooring Master: Colin Marshall

Club Secretary: Sue Watson

QUEENBOROUGH ROWING CLUB

www.freewebs.com/queenboroughrowingclub/index.htm

Queenborough Rowing Club is located in Queenborough on the Isle of Sheppey, we meet twice weekly on Wednesday evenings and Sunday Morning for both pleasure rowing and competitive rowing. We cater for all ages from 13 years and for all standard of rowers. We have a mixed array of craft but mainly row Scarborough Gigs which are fixed seat four oared craft. We have competed over the past few years in the Great River Race and intend to enter three or four boats into the 2008 race.

We are always looking for new members of all ages please send an e-mail and we will contact you with details or meet us at the boat and introduce yourself.

Club Secretary: Duane Ashworth

ashwhitswanley@aol.com

QUEENBOROUGH YACHT CLUB

www.queenboroughyc.co.uk

KEY: SC MC PB 50

The club owns the All Tide Landing leading from the harbour on to the High Street: the clubhouse is a few doors up. Visitors are allowed to berth for 15 minutes with access from the shore via tokens available in the town. Visiting clubs are always welcome, as are all members of the sailing fraternity. We are an active club for both racing and organised cruises to the SE Coast, France, Holland and the Channel Islands. QYC Open day will be held on Saturday 9th July.

Queenborough Yacht Club

7 High Street, Queenborough, Kent ME11 5AA

Commodore:

commodore@queenboroughyc.co.uk

Vice Commodore:

vicecommodore@queenboroughyc.co.uk

Secretary and Rep to MYA:

secretary@queenboroughyc.co.uk

Club Treasurer:

treasurer@queenboroughyc.co.uk

ROCHESTER CRUISING CLUB

www.rochestercc.co.uk

KEY: MC, 180

Founded in 1905 and with its clubhouse on the Esplanade beneath Rochester Castle, the club offers a comprehensive range of facilities for the motor cruising enthusiast. It has an active social calendar as well as home waters and abroad cruising from its deep water pontoons. The club is responsible, annually, usually early in July for providing the Admiral's Barge and accompanying the Mayor of Medway, who, as Admiral of the River, cruises those parts of the river under his jurisdiction.

Rochester Cruising Club

10 The Esplanade, Rochester, Kent ME1 1QN

T: 01634 841350

rochcc@rya-online.net

Commodore: John Rufford

M: 07850 057849

john.rufford@erith.net

Vice Commodore: David Roberts

M: 07961 700930

davey50@hotmail.com

Rear Commodore Offshore: Tony Ornsby

M: 07778 389663

tonysueornsby@hotmail.co.uk

Rear Commodore Inshore: Kathy Crabbe

M: 07721 557472

kathy.crabbe@rya-online.net

ROYAL ENGINEER YACHT CLUB

www.army.mod.uk/royalengineers/sport/reyc/index.htm or www.army.mod.uk and follow the links through sailing and to Chatham Branch.

A global yacht club. Its serving Royal Engineer members can be found in all corners of the world where the British Army is engaged. The REYC is one of the oldest yacht clubs in the world. Its original base being on a raft in St Mary's Creek, now the site of Chatham dockyard locks. Activities in Chatham have recently been reduced and Royal Engineers are now able to carry out sail training at the excellent facilities in Gosport and Thorney Island. Membership is made up of serving Royal Engineers and other servicemen and civilians attached to the garrison. The club operates over 50 moorings in Chatham and Upnor reaches.

Mooring and Membership enquiries to:

reycchathamharbourmaster@hotmail.co.uk

Rep to MYA: Maj (Rtd) Brian Cameron

T: 01634 841216

ROYAL NAVAL SAILING ASSOCIATION (MEDWAY BRANCH)

KEY: SC, 60

A branch of the national organisation. Open to serving and former members of the Royal Navy, Royal Naval Reserve, Sea Cadet Corps CCF and civilians who are, or who have worked for the MOD. Branch membership is also available to other ex forces personnel and the civilian community. Our AGM is held in October and the annual dinner in November.

Moorings are available in Chatham Reach via the Historic Dockyard for 2011 and visitors are welcome to stay temporarily.

Branch Captain: Paul Mace

T: 01634 200970

paul.mace@talktalk.net

Policing your Neighbourhood



Hi, I am PCSO Michael Dann and I am one of your local neighbourhood officers. I am responsible for patrolling Medway's marine communities and am happy to provide you with support and advice, should you require it.

To contact me please call **07772 226213** or email **michael.dann@kent.pnn.police.uk**
In an emergency please call **999**



Kent
Police



FAVERSHAM CHANDLERY



**A FANTASTIC RANGE OF PRODUCTS
FOR THE PRACTICAL BOAT OWNER
AND MARINE PROFESSIONAL**

FAVERSHAM CHANDLERY LTD
IRON WHARF BOATYARD, ABBEYFIELDS
FAVERSHAM, KENT ME13 7BY

TEL: **01795 531777**
FAX: **01795 591957**
EMAIL: SHOP@FAVERSHAMCHANDLERY.CO.UK
WWW.FAVERSHAMCHANDLERY.CO.UK

OPENING HOURS:

MONDAY	9AM - 5PM
TUESDAY	CLOSED
WEDNESDAY	CLOSED
THURSDAY	9AM - 5PM
FRIDAY	9AM - 5PM
SATURDAY	9AM - 5PM
SUNDAY	9AM - 2PM

Secretary: Brian Foreman

T: 01580 893615

brianforeman@yahoo.com

Rep to MYA: Lawrence McVeigh

SEGAS SAILING CLUB

www.segassailingclub.co.uk

KEY: C, D, SC, MC, 75

The Club has severed its former connection with British Gas as an employees' club, and is now a registered Community Amateur Sports Club which is open to accept new members from the whole community. Deep water moorings are available, as well as a limited number of drying alongside and half-tide berths, plus secure winter storage ashore on clean hard standing with access to water and electricity, subject to a length limit of 10 metres overall boat length for all berths, and the provision by members of suitable wheeled cradles for onshore storage. Dinghy and cruiser racing is organised throughout the season, along with several club cruises in company during the season, and a lively social programme throughout the year.

SEGAS Sailing Club

The Strand, Gillingham, Kent ME7 1TT

T: 01634 855365

Commodore: Dez Cass

T: 01634 666503

dez.cass@virgin.net

Rep to MYA: Paddy Newton

T: 01634 377998

paddy.newton@orange.net

Honorary Secretary: Robin Catchlove

T: 01634 826794

robin.catchlove@cityoflondon.gov.uk

STROOD YACHT CLUB

www.stroodyachtclub.co.uk

KEY: D, MC, SC, 150

Founded in 1945, Strood Yacht Club is a family orientated club located on the West bank of the Medway opposite Rochester Castle. Facilities include a modern, fully licensed clubhouse, showers, 130 all-tide pontoon moorings,

mudberths, slip and dry-dock, craneage and land berthing. Members enjoy a full calendar of both social and cruising events to which visiting clubs are welcome as are the disabled who have specially adapted facilities for sailing and clubhouse use.

Strood Yacht Club

Temple Manor Marsh, Knight Road, Strood, Rochester, Kent ME2 2AH

T: 01634 718261

Commodore: Malcolm Rayner

Honorary Secretary: David Coward

Rep to MYA: Richard Borley

UPNOR SAILING CLUB

www.upnorsailing.co.uk

KEY: SC, 140

Founded over 30 years ago, USC has an attractive clubhouse created by the refurbishment of three traditional waterfront cottages. It has 92 fore and aft moorings opposite the clubhouse, many of which are all tide access. The Club has all tide floating pontoon access to the water with facilities for alongside loading/unloading of stores and crew. A tender park and two scrubbing off docks are provided adjacent to the pontoon.. There will be a full programme of cruising in company together with a limited race programme. A series of social events will be held throughout the year and the clubhouse is normally open on Wednesday evenings and Sunday lunchtimes.

Upnor Sailing Club

1-3 Pier Place, Lower Upnor, Rochester, Kent ME2 4UY

T: 07092 197923

upnor.sailing@ukonline.co.uk

Commodore: Murray Marchant

Vice Commodore: Ian Campbell

Honorary Secretary: Jean Andrews

Honorary Membership Sec: Sylvia Adshead

Honorary Treasurer: Fiona Tidd

VICTORY MOORINGS - HISTORIC DOCKYARD CHATHAM

KEY SC, PB

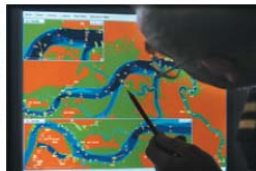
Victory Moorings are situated in Chatham's historic dockyard at 51° 23.445'N, 000° 31.526'E. These are the only all tide unlocked pontoon moorings with unlimited air draft

Peel Ports Medway

wish you safe and pleasant yachting
on the Medway and Swale



Sheerness Docks, Sheerness,
Kent ME12 1RS
Tel: +44 (0)1795 596596
Fax: +44 (0)1795 660072
www.medwayports.com



MARITIME OPERATIONS & LOGISTICS CENTRE

'Experienced trainers providing a professional service'



- Comprehensive range of R.Y.A. training courses.
- Professional yacht training packages.
- Taylor made courses designed for organisations or groups of individuals.
- All STCW 95 basic safety courses

For more information please contact:-

Tel: +44(0) 1322 629600 (Admin Office)
+44(0) 1474 534960 (Thameside Campus)

Fax: +44(0) 1322 629687 (Admin Office)
+44(0) 1474 360244 (Thameside Campus)

email: smol@nwkclege.ac.uk
www.nwkclege.ac.uk/smol

2011

Club Listings

down river from Rochester bridge. Berth holders are at liberty to relax in one of the Royal Dockyard restaurants or to stroll its extensive grounds.

Victory Moorings

The Historic Dockyard, Chatham,
Kent ME4 4TZ
T: 07785 971797

Proprietor and Rep to MYA:

Anthony Moss
T: 07785 971797
asm-victory@hotmail.co.uk

WHITTON MARINE

www.whittonmarine.com

KEY: SC, PB, MC, M

Whitton Marine is situated in the Hoo Creek on the River Medway, 8 miles from Garrison Point, 35 minutes from the Blackwall Tunnel, 60 minutes from LeShuttle and 20 minutes from Junction 2 of the M25.

We offer a full range of marine and brokerage services from our marina in Kent. From working slipways to tugs, engineering to restoration, brokerage to sales whether it be buying and restoring a 100ft classic boat to buying a mirror dingy our philosophy is to treat every client as an individual. We take pride from being a family built and run business have been providing extensive marine services to clients since we were established in 1986.

Whitton Marine

Vicarage Lane, Hoo, Rochester,
Kent ME3 9LB
T: 01634 250593 F: 01634 250593
whittonmarine@btconnect.com

WILSONIAN SAILING CLUB

www.wilsoniansc.org.uk

KEY: D, M, 200

WSC is a friendly, family oriented dinghy only club with its clubhouse and grounds attractively situated on the wooded shore of Cockham Reach. Launching is at all states of

the tide from a shingle beach. WSC has a full racing programme from the end of March until the end of October, followed by a Winter Open series until the weekend before Christmas. Our New Year's Day race, the "Chilly Willies" is an open event with entry fees to the RNLI. A "Warm-Up" series runs from the middle of February to the end of March. There is class racing for Laser 2000s and Miracles, plus three handicap fleets - Fast, Medium and Slow/Junior. WSC is an RYA registered Training Establishment and has RYA/Volvo Championship Club status.

Wilsonian Sailing Club

Church Farm, Main Road, Hoo, Rochester,
Kent ME3 9HF
T: 01634 250318

Commodore: Jeremy Drummond

T: 01732 840830

jdrummond@tiscali.co.uk

Vice Commodore: Paul Thorpe

T: 01634 713859

jayne.paul@fsmail.net

Rear Commodore: Christine Godber

T: 01322 337703

christinegodber@aol.com

Rep to MYA: Tom Sims

T: 01689 854627

tomsims775@btinternet.com

FREE Safety Equipment Advisory Checks by the Medway & Swale Team of Sea Safety Advisers



For information contact: David Holden

Lifeboat Sea Safety Officer

T: 01795 667280

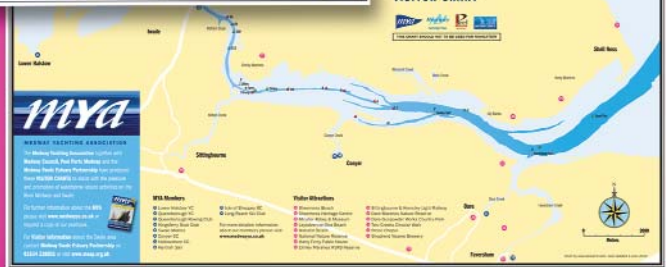
M: 07958 496812

E: swalemarin@aol.com



Lifeboats

Come and explore North Kent



Download our FREE pdf VISITOR CHARTS for the River Medway and Swale

For further information about the **Medway Yachting Association** and to download the charts please visit **www.medwayya.co.uk**



REPRESENTING LEISURE BOATING ON THE RIVER MEDWAY AND SWALE

Exploring the Estuary

Have you ever sat on your boat and thought how nice it would be to moor up and go for a stroll alongside the estuary? If you have, then you'll be pleased to know that the estuary's adjacent countryside contains several hundred miles of footpaths, just waiting to be explored. Go on... get yourself a walks guide and stretch those legs!

Feature and Images by Mark Loos MSEP



One of the area's most popular walks is the Saxon Shore Way, which allows the walker to

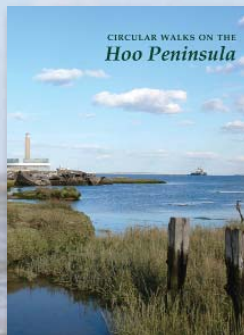
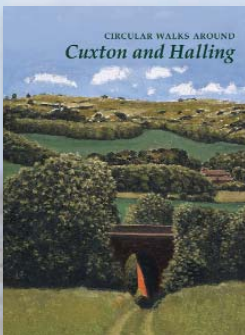
roughly follow the coastline from Gravesend to Hastings, as it was around 1600 years ago. For those of you who are a little less ambitious, there are several publications available, detailing the area's promoted walks, available from local Tourist Information Centres and selected libraries. The following websites also offer a number of guides and walking routes, as downloadable PDF's:

- www.faversham.org/walking
- www.kent.gov.uk/explorekent.gov.uk
- www.medway.gov.uk and
- www.msep.org.uk/downloads

Additionally, you can order free copies of all the walking guides, shown below, from the Medway Swale Estuary Partnership, by e-mailing msep@kent.gov.uk or calling us on **01634 338891** (Wednesday - Friday).

Please remember to follow the Countryside Code:

- ✓ Respect - Protect - Enjoy
- ✓ Be safe - plan ahead and follow
- ✓ Leave gates and property as you find them
- ✓ Protect plants and animals, and take your litter home
- ✓ Keep dogs under close control





Tollesbury Marina



visiting yachts welcome
brokerage & new boat sales
repairs re-sprays osmosis



marina berthing haul out & storage

The Yacht Harbour, Tollesbury, Essex, CM9 8SE
tel 01621 869202/868471 marina@woodrolfe.com
www.tollesburymarina.com

Whitton Marine

Vicarage Lane, Hoo, Rochester, Kent, ME3 9LB



SMARTWAVE

ISUZU
MARINE

HMI Sole Diesel

We are pleased to announce that we are now agents for the MAC and Smartwave range of super tough RIB style boats. We can also supply Isuzu, Sole and Farymann engines from 7.5 to 103hp, as well as moorings and dry docking. For further information please contact us:

Boatyard: 01634 250593

Boat sales: 01634 255515

whittonmarine@virgin.net

www.whittonmarine.com

Skipper's Line
Yacht Paints & Varnishes

178
877

Your boat deserves the best!

Our extensive range of high performance yacht coatings offer a real solution for all your coating requirements for steel, wood GRP & aluminium boats.

 www.skipperspaints.co.uk

Visit our online shop **Yacht Paint Shop**

Tel: 01634 815522 Fax: 01634 815533 Email: info@skipperspaints.co.uk

Kingsferry Bridge transiting PROCEDURE

cutout and keep

- 1 At a distance of about **half an hour steaming time** contact the bridge operator on Channel 10 VHF (expect a delay in the bridge operator replying) requesting the next available bridge lift.
- 2 The bridge operator will most likely ask **your position** and what type of vessel you are navigating.
- 3 The bridge operator **will inform you** of the next available bridge lift, ensure you adjust your speed to arrive at this time.
- 4 The bridge is **controlled by Network Rail** and trains on and off the Isle of Sheppey take priority.
- 5 The bridge **operator must receive clearance** from Sittingbourne signal box before any bridge lift can take place, don't expect to turn up unannounced and get an immediate bridge lift.
- 6 Once the bridge is raised, **proceed through the channel** as quickly and safely as possible.
- 7 If an **incident occurs** transiting the bridge, please note the details and inform Medway VTS on Channel 74 VHF or call 01795 663025 as soon as possible supplying full details. This report will be logged for future reference.
- 8 If after following this procedure you **still encounter problems**, please inform Guy Peto, Deputy Harbour Master **Medway Ports on 01795 596587** during office hours.

Other Agencies

CRUISING ASSOCIATION

David Holden

T: 01795 580930

E: swalemarin@aol.com

EAST COAST PILOT

Dick Holness

T: 01227 366831

www.eastcoastpilot.com

EAST KENT YACHTING ASSOCIATION

Mr Ted Temple

E: edwardtemple31@msn.com

GRAVESEND LIFEBOAT

T: 01474 328465

lan_dunkley@rnli.org.uk

KENT SCHOOLS SAILING ASSOCIATION

Mr Martyn Styles

T: 01304 371742

E: martyn.styles@talktalk.net

www.kssa.co.uk

KENT COASTAL NETWORK

Mr Chris Drake

T: 01622 221266

E: chris.drake@kent.gov.uk

www.coastalkent.net

MEDWAY POLICE

T: 01634 891055

www.kent.police.uk

MEDWAY PORTS

Cathryn Spain Harbourmaster

T: 01795 596596

E: cathryn.spain@medwayports.com

Guy Peto Deputy Harbourmaster

T: 01795 596587

E: guy.peto@medwayports.com

MEDWAY RIVER USERS ASSOCIATION AND REP TO THE RYA

Mrs Maureen Clayton

T: 01622 831529

MEDWAY SWALE ESTUARY PARTNERSHIP

Mr Mark Loos

T: 01634 338891

E: msep@kent.gov.uk W: www.msep.org.uk

NORTH KENT YACHTING ASSOCIATION

Mr Steve Davies

T: 01322 386925 T: 01474 333456

E: nkya@ryase.org.uk

OCEAN CRUISING CLUB

John Stewart Medway Port Officer

T: 01634 403880

E: dr.beard@virgin.net

www.oceancruisingclub.org

RYA SE REGION FLEET HIRE

Mr Julian Irons

T: 01304 241631 M: 07980 435281

E: julian.ironsb@btinternet.com

RYA SE REGION CHAIRMAN

Mr Tony Rowe

T: 01732 456875 M: 07738 754613

E: tony.rowe1@tiscali.co.uk

RYA SE REGIONAL DEVELOPMENT OFFICER

Mr Andy Hooper

T: 07748 806733

E: andy.hooper@rya.org.uk

RYA REGIONAL CRUISING REP

Mr Nick Jordan

T: 01323 460418 M: 07850 676316

E: nickjordan@stressbreaker.org.uk

SHEERNESS LIFEBOAT

David Holden Sea Safety Officer

T: 01795 664868 M: 07958 496812

E: swalemarin@aol.com



Successfully supplying new yachts for over 30 years

Clarke and Carter Interyacht Ltd is the largest yacht and powerboat broker on the East and Kent Coast with offices at Levington, Burnham and Gillingham. Over 200 brokerage boats available. **Visit:** www.clarkeandcarter.co.uk

We are importers for the Jeanneau range of yachts and agents for Jeanneau powerboats. We can offer demonstrations across the range. We welcome part exchange enquiries and will be pleased to assist with marine finance and insurance.

We operate a worldwide spare parts service for past and present Jeanneau models, power or sail. Just log on to the web site, call us on **01621 785 600**, or email: spares@clarkeandcarter.co.uk



New Jeanneau Sun Odyssey 409



New Jeanneau Cap Camarat 8.5WA

Clarke & Carter holds two annual yacht fairs, one of which is a **Yacht and Motorboat Fair held in Levington 28th-30th October 2011**, where we have a selection of over 100 used boats for customers to view in one location.

Clarke and Carter in association with Gillingham Marina host the **Medway Boat and Chandlery Fair at Gillingham Marina 9th-10th April 2011**, on show are new and used boats on and off the water, great chandlery discounts and an ideal opportunity for you to meet and discuss with specialists all aspects of boat ownership.



KENT OFFICE Gillingham Marina Chandlery 173 Pier Road Gillingham Kent, ME7 1UB

T: 01634 571605 E: kent@clarkeandcarter.co.uk

ESSEX OFFICE Burnham Yacht Harbour Burnham-on-Crouch Essex CM0 8BL

T: 01621 785600 E: essex@clarkeandcarter.co.uk

SUFFOLK OFFICE Suffolk Yacht Harbour Levington Ipswich IP10 0LN

T: 01473 659681 E: suffolk@clarkeandcarter.co.uk

Visit: clarkeandcarter.co.uk





Gillingham Marina



NEWLY DREDGED TIDAL BASIN



Offering all the facilities of the Locked Basin
at a more economical rate with

The Yacht Harbour
Association Ltd.



approximately 2.5/3 hours either side of high water.

Craft in the Tidal Basin come to rest in soft mud berths at low water and all types of keel and propulsion configurations can be accommodated.



Gillingham Marina

Boat & Chandlery Fair

FREE ENTRY

Saturday 9th & Sunday 10th April 2011

CONTACT US FOR SPECIAL OFFERS

Tel: 01634 280022 Fax: 01634 280164 Email: berthing@gillingham-marina.co.uk
Gillingham Marina, 173 Pier Road, Gillingham, Kent ME71UB

www.gillingham-marina.co.uk